

TK Elevator Korea Ltd.

25 World Cup buk-ro 54-gil, Mapo-gu, Seoul, 03924, Korea  
P +82-2-2610-7510, 7772



# enta200

STEP INTO MOMENTS  
OF STYLE





# TK Elevator Korea

**MOVES PEOPLE**  
**- THE FUTURE OF URBAN MOBILITY**

## enta200: step into moments of style

Stylish and practical, enta200 has been engineered to meet the needs of low-rise residential and commercial applications. Stylish cabin designs combine with the practical features of this machineroom-less elevator to provide a comfortable ride and add value to your project.



Headquarter, Seoul



Cheonan Test tower (157m)

# Cheonan Elevator Campus

TKE Korea's Cheonan Plant is a smart factory with an annual production capacity of 20,000 units. The factory has not only elevator production facilities, but also training, culture, and sports facilities, that's why we call it elevator campus.

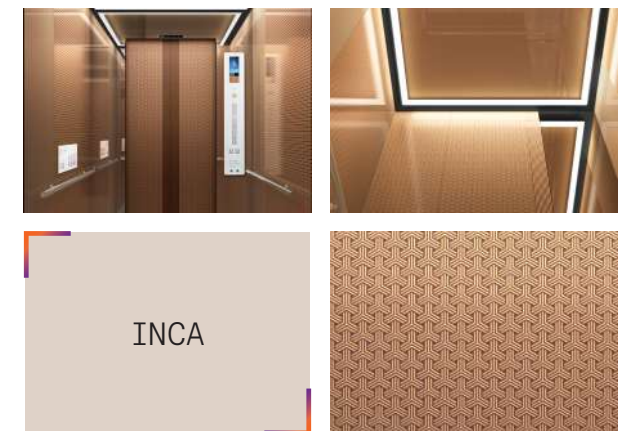
## We have...

- SMART FACTORY** Fully-automated production system based on IoT and big data
- TRAINING CENTER** Seed Campus for the training for employees and partner's employees
- CULTURE SPACE** Mini theater, café and customer showroom
- SPORTS FACILITIES** Indoor golf, table tennis, gym, basketball and volleyball facilities



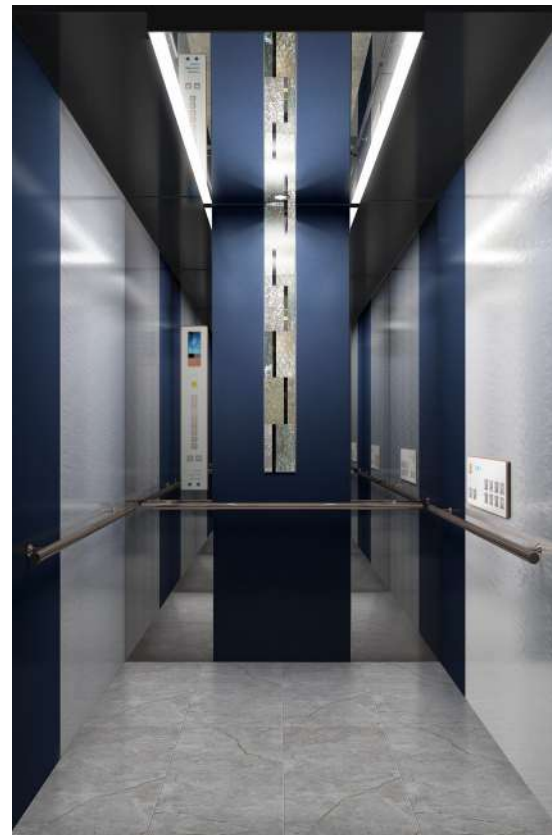


# STANDARD DESIGN



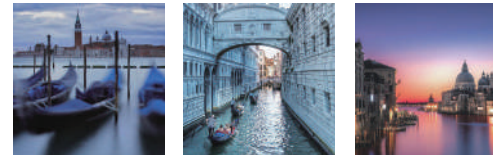


# VENICE

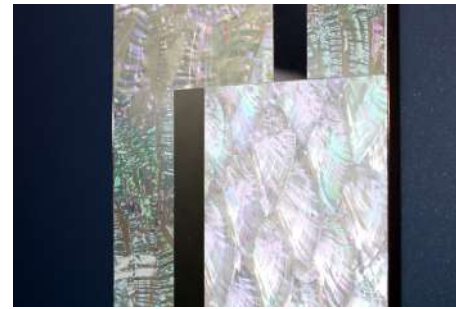


## CABIN DESIGN

Ceiling	CE-SE1C
Wall	STS Mirror, Supervib (Silver), Texcoat (Navy) + Seashell Panel, Texcoat (Navy), Fine Art (NFA-04)
Door	Fine Art (NFA-05)
COP	DS-J-TK11NSB HAS-J-TK11NSB
Handrail	HRR-01B
Floor	DET6258



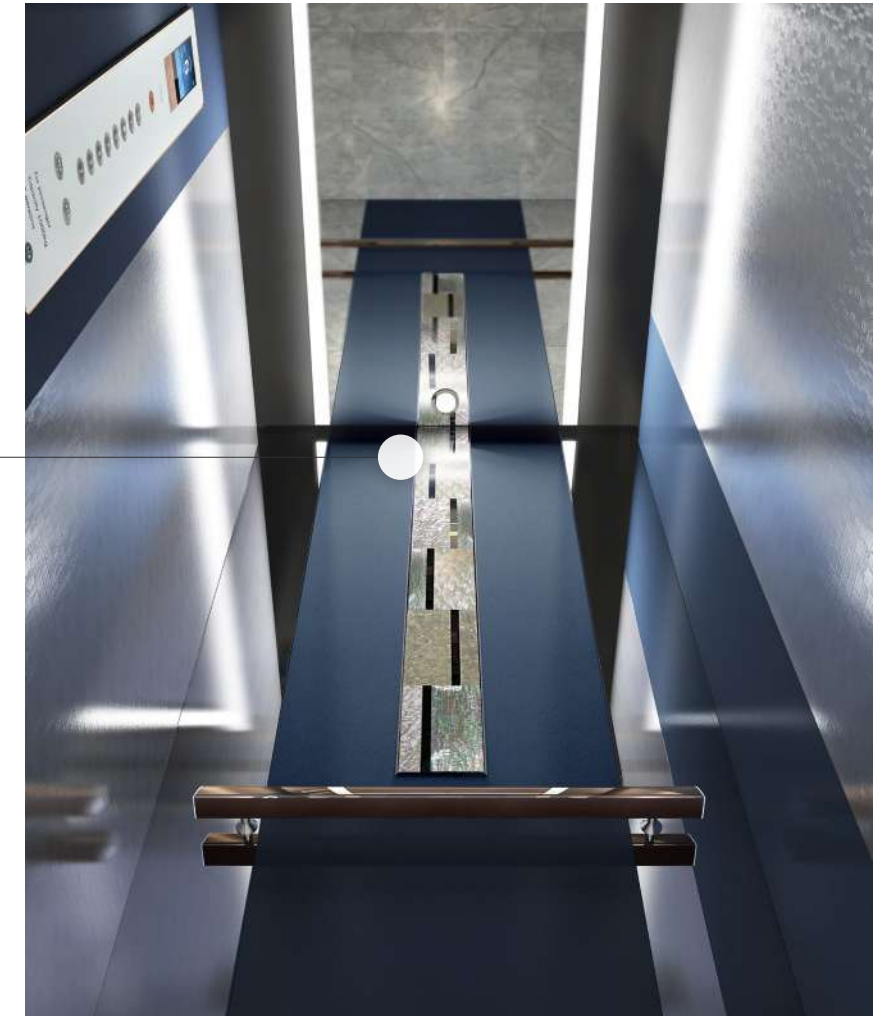
### Material feature



An abstract twist on mother-of-pearl and glass adds Venetian sophistication.



Rich blues express the city's timeless link with the sea.



Handrail (one rear side)



Main entrance



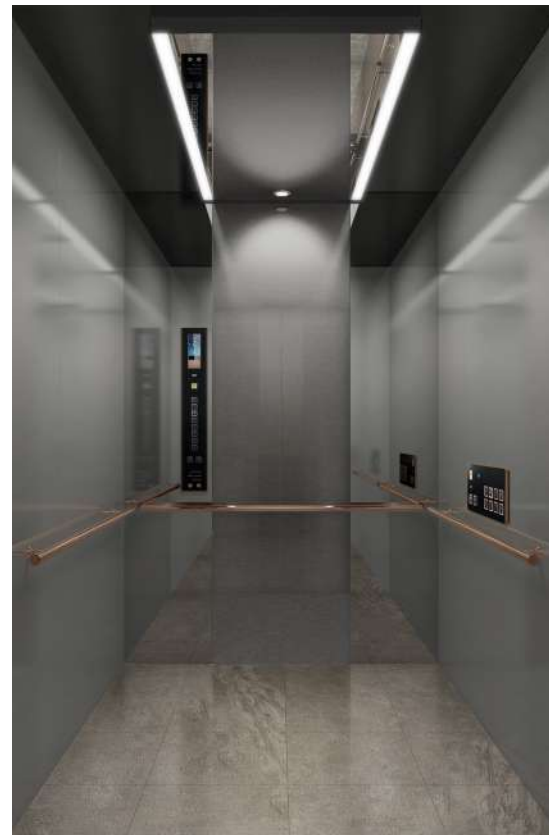
Other entrance



Entrance with control panel



# ATHENS



## CABIN DESIGN

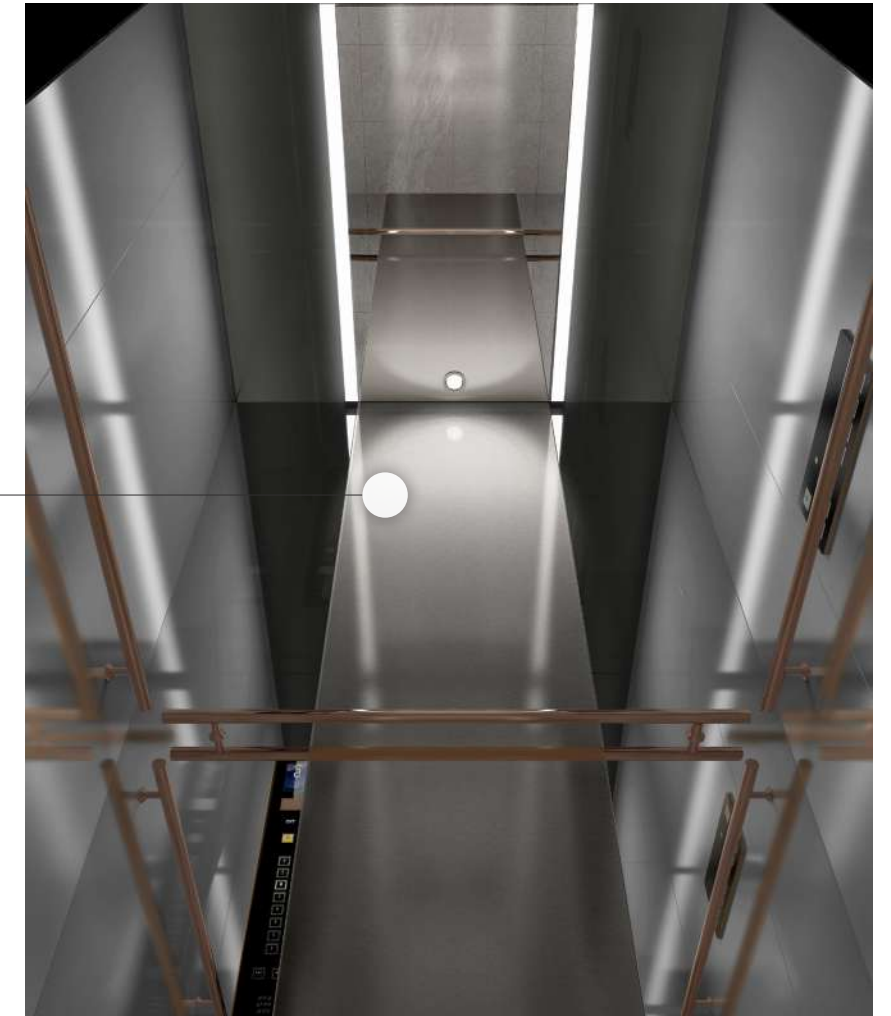
Ceiling	CE-SE1C
Wall	STS Mirror, Supervib (Deepgray), Hi-Touch (HT-02DG),
Door	Hi-Touch (HT-01DG)
COP	DS-K-TK11NBB HAS-K-TK11NBB
Handrail	HRR-01B
Floor	DET6272



## Material feature



Modern design expressing the magnificence and mysteriousness of ancient cities.



Main entrance



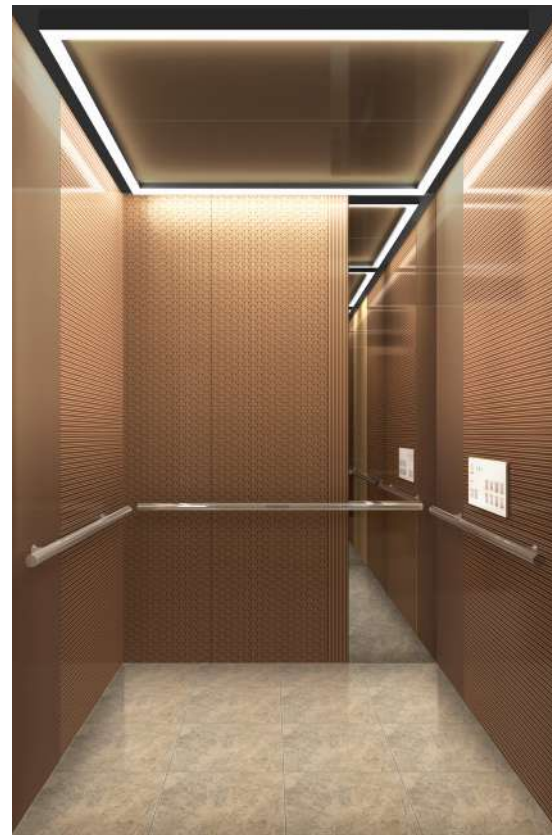
Other entrance



Entrance with control panel



# INCA

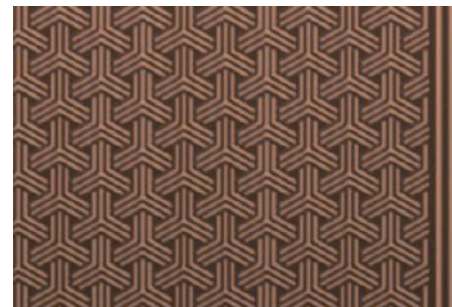
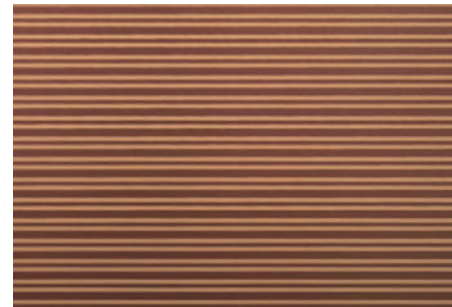


## CABIN DESIGN

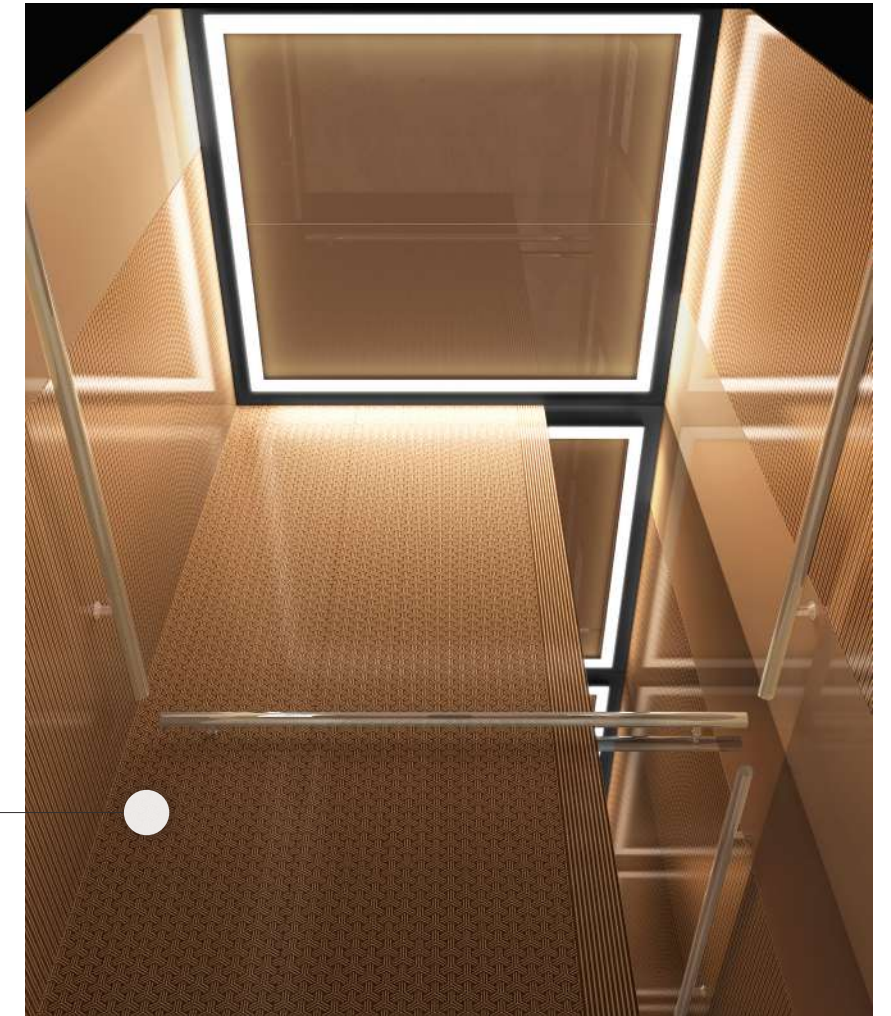
Ceiling	CE-SD2C
Wall	STS Mirror, Silk Metal (SP-04BR), Silk Metal (SP-05BR), Powder Coat (Inca brown)
Door	Silk Metal (SP-03BR)
COP	DS-J-TK11NSB HAS-J-TK11NSB
Handrail	HRR-01G
Floor	DET6240



### Material feature



Classical design inspired by the ancient Inca Empire.



Handrail (one rear side)



Main entrance



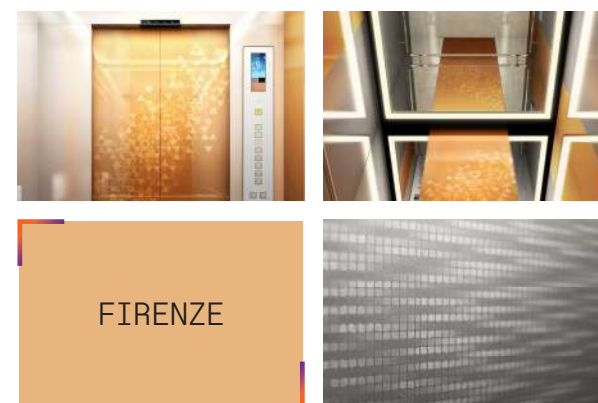
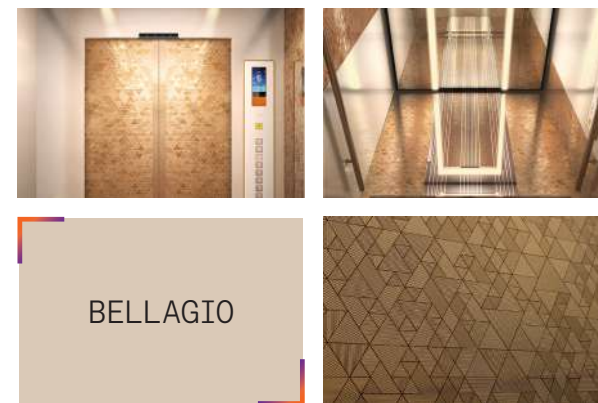
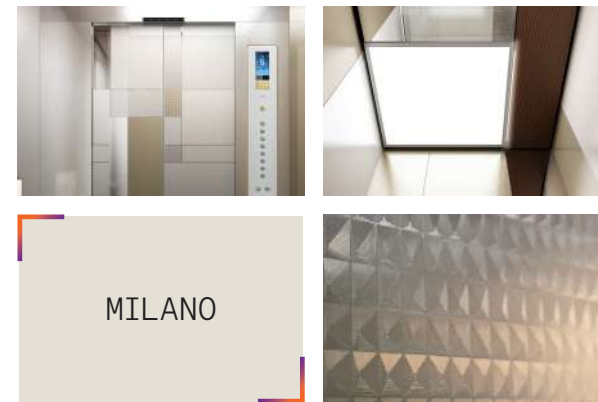
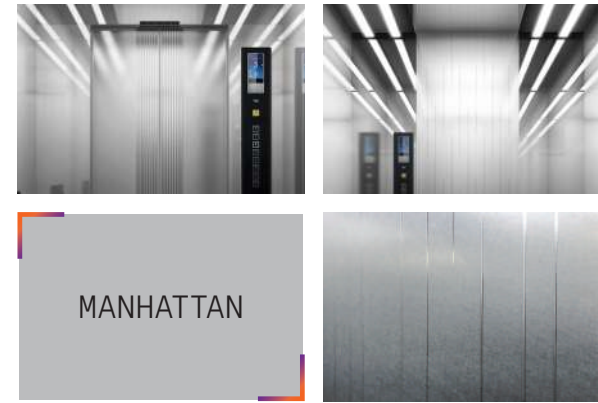
Other entrance



Entrance with control panel



# PREMIUM DESIGN

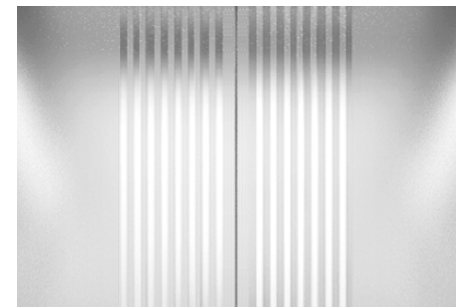




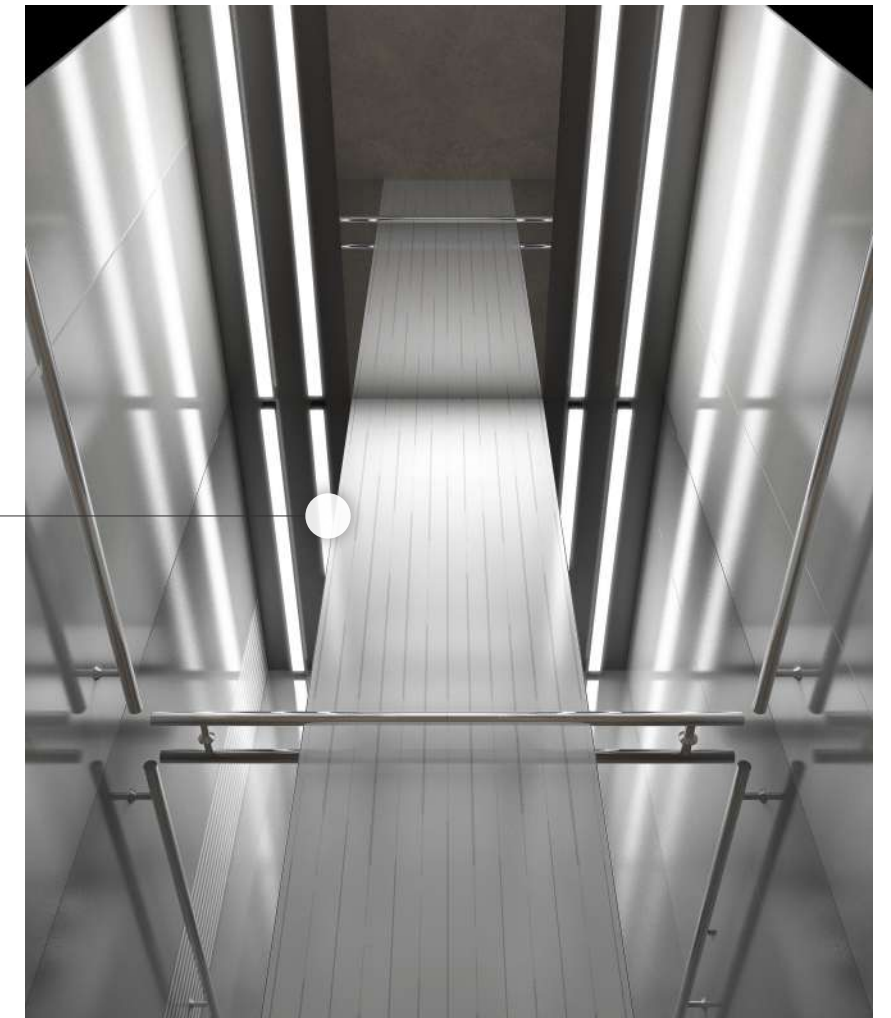
# MANHATTAN



## Material feature



Silver, mirrors and steel. Urban sensibility with a New York attitude.



## CABIN DESIGN

Ceiling	CE-SA1C
Wall	STS Mirror, Supervib (Silver), Hi-Touch (Rain)
Door	Hi-Touch (HT-01SV)
COP	DS-H-TK11NB HAS-H-TK11NB
Handrail	HRR-01G
Floor	DET6239 / DET2905



Main entrance



Other entrance



Entrance with control panel



# MILANO

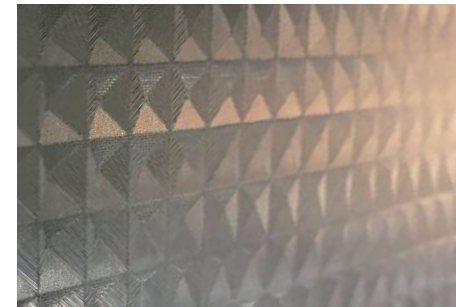


## CABIN DESIGN

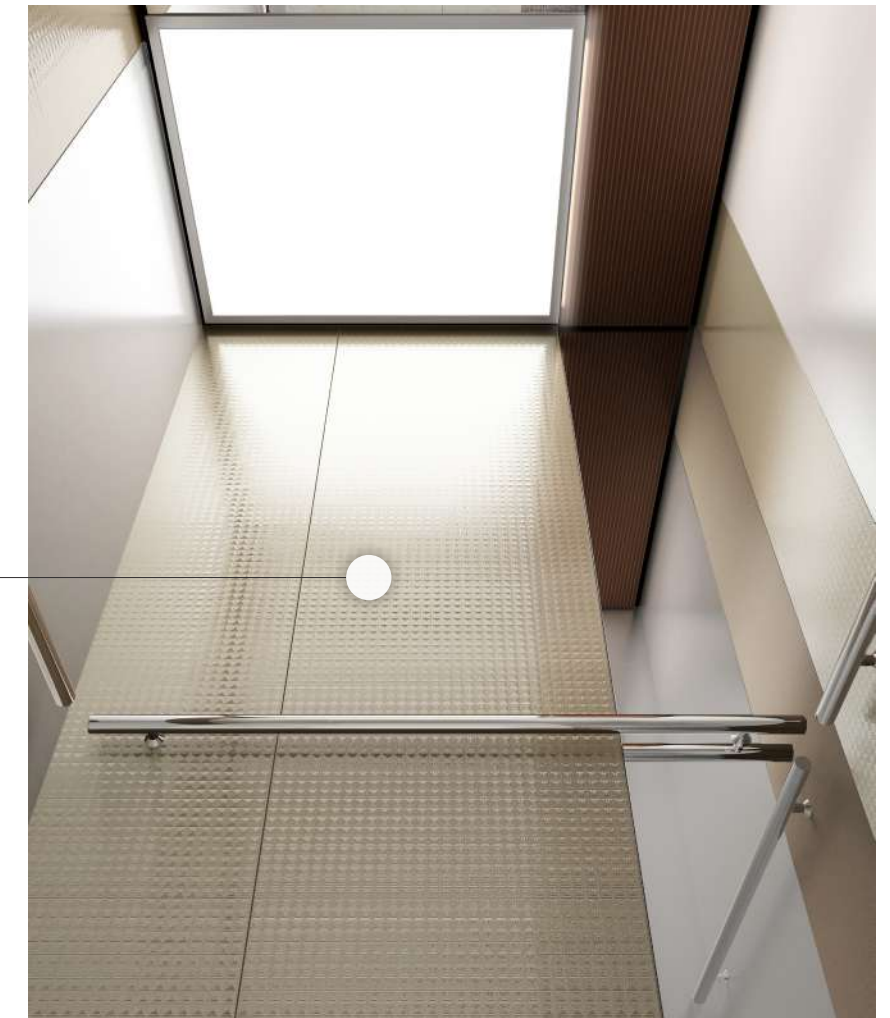
Ceiling	FX-01
Wall	STS Mirror, Supervib (Silver), Hi-Touch (Gold)
Door	STS Mirror, Hi-Vib, Bead + Laser cutting (LM-20VB)
COP	DS-G-TK77G HAS-G-TK77G
Handrail	HRR-01G
Floor	DET2905 / DET2494



### Material feature



Classic earth tones and patterns influenced by Mondrian.



Handrail (one rear side)



Main entrance



Other entrance



Entrance with control panel

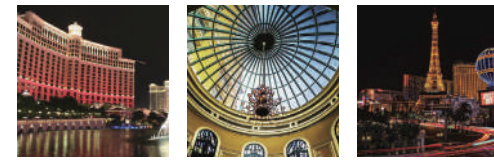


# BELLAGIO



## CABIN DESIGN

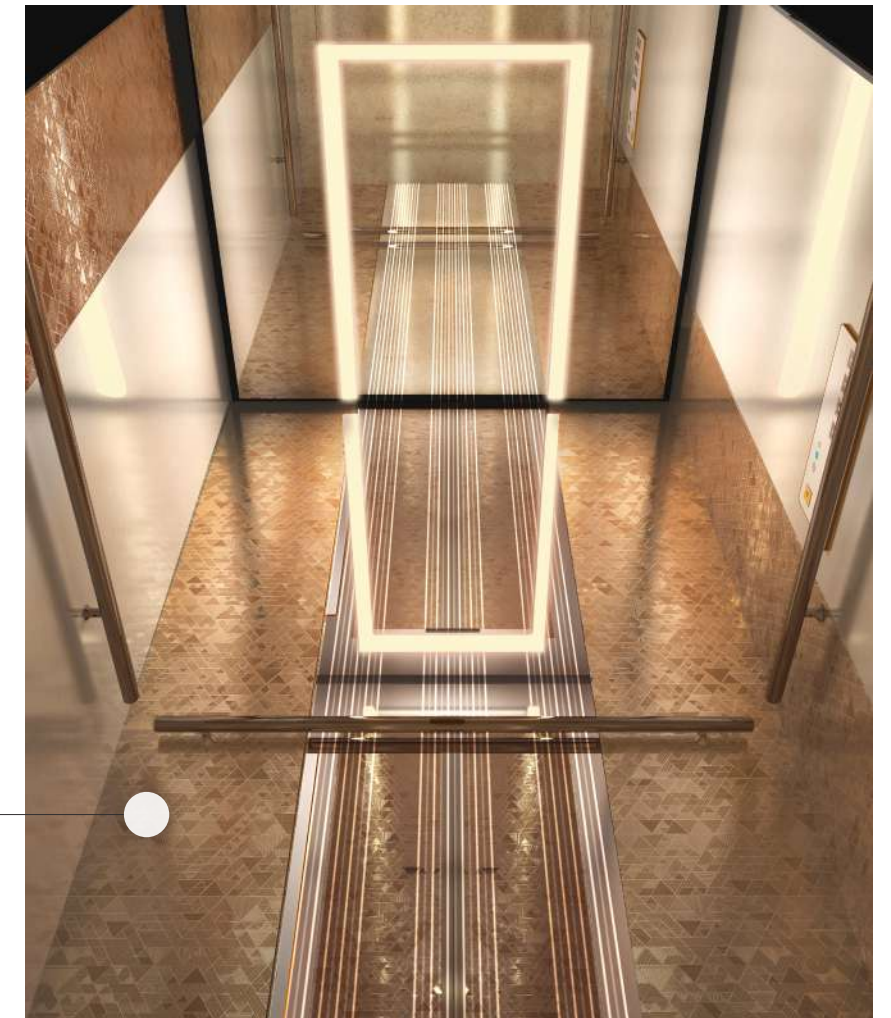
Ceiling	CE-SB1W
Wall	Supervib (Silver), STS Mirror + Laser Graphic, Hi-Touch (HT-04BR)
Door	Hi-Touch (HT-03BR)
COP	DS-J-TK11NSB HAS-J-TK11NSB
Handrail	HRR-01B
Floor	DEW4713 / DET2251



### Material feature



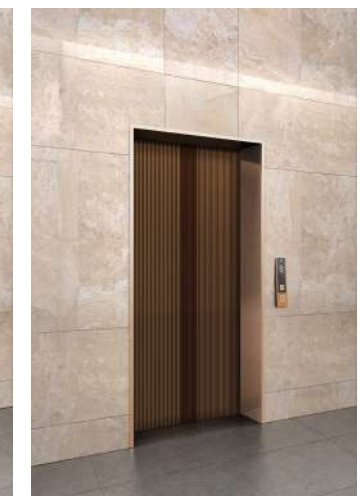
Inspired by the Bellagio Hotel, three dimensional patterns in bronze and gold reflect the opulence of Las Vegas.



Handrail (one rear side)



Main entrance



Other entrance



Entrance with control panel

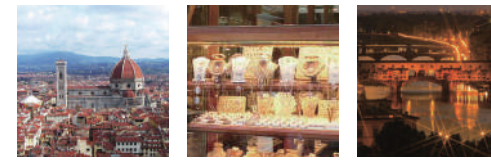


# FIRENZE

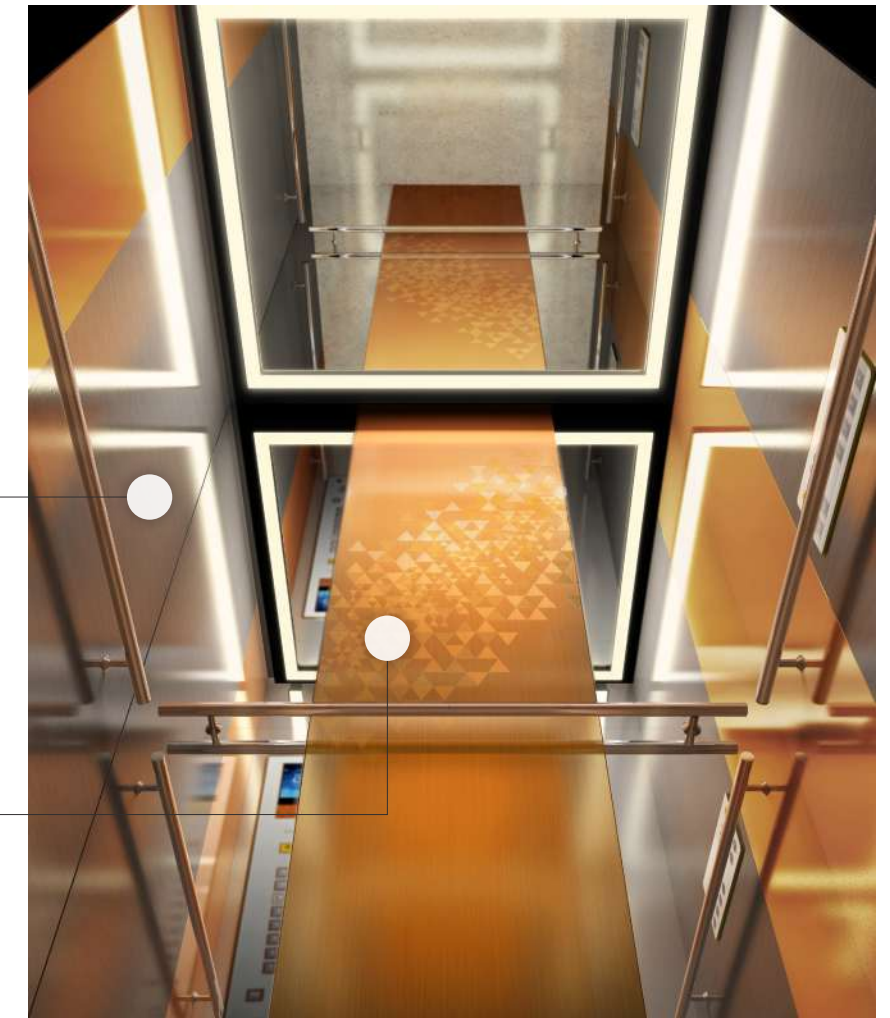
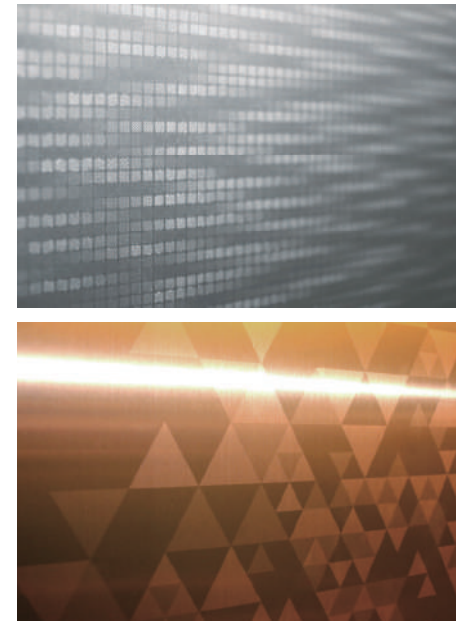


## CABIN DESIGN

Ceiling	CE-SD3W
Wall	STS Mirror, Supervib (Silver), Fine Art (NFA-04), Superteel (Bronze) + Laser Graphic (ST-03BZ), Superteel (Bronze)
Door	Superteel (Bronze) + Laser Graphic (ST-02BZ)
COP	DS-J-TK11NSB HAS-J-TK11NSB
Handrail	HRR-01B
Floor	DET2251 / DET2245



### Material feature



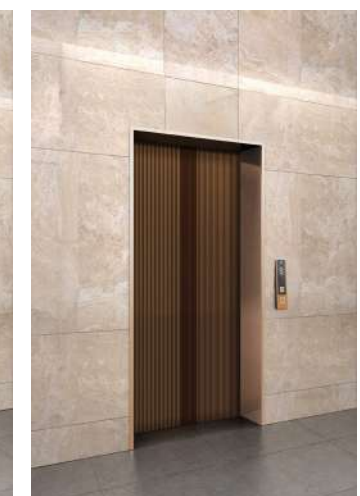
Inspired by night views of the Ponte Vecchio in Florence, this chic design is right up-to-date.



Handrail (one rear side)



Main entrance



Other entrance



Entrance with control panel



# Stylish COP

With a focus on usability, the colorful LCD display makes information easier to read. The image moves in the direction of the elevator to give a reassuring 'visual sense' of movement.

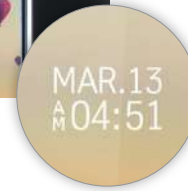


## Dynamic TFT LCD

Crystal clear, vibrant graphics put passengers at ease and guide them to their destination.



Scan to dynamic LCD

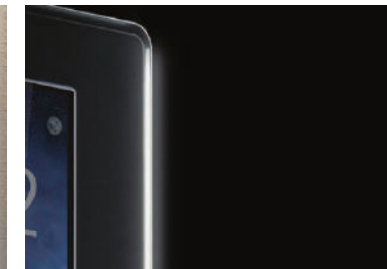


## Attractive details

For a better design, we pay attention to the small details.



Anodized frame



Backlight



High quality sound

## New color material

Aluminum material with rose brown color



Frame



Button



Speaker

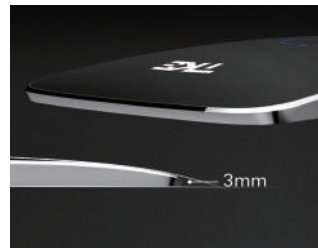


# LOP & LIOP

Unlike conventional flat fixture designs, these curved hall buttons have been meticulously designed to enhance the premium quality of any building. They deliver a superior user experience in terms of both look and feel.



## Slim Look



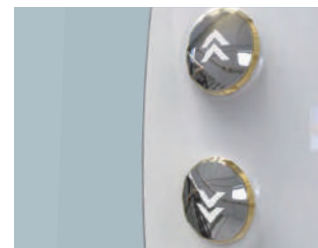
Designed for an enhanced sense of proportion.

## Touch button



Simplified UP/DOWN graphic design and state-of-the-art touch button.

## Push button



Rounded button design in stylish sapphire-white.

## Push button LOP / LIOP



Antibacterial button with NCC (Nano-ceramic Color Coating)



TK11NB



# Fixtures

## COP



DS-F-TT22 DS-G-TK77G DS-J-TK11NSB DS-H-TK11NB DS-K-TK11NBB

## COP assisting the disabled



HAS-H-TK11NB HAS-G-TK77G HAS-K-TK11NBB HAS-J-TK11NSB

\* Touch button can be applied for only white color COP up to 8 floors

## Indicator



## LOP / LIOP



BSM-TT44A BSM-TT44AD BSM-TK77G BSM-TK77GD BSM-TT44AL BSM-TK77GL



BSK-TT44 BSK-TT44D BSK-TK77B BSK-TK77BD BSK-TT44L BSK-TK77BL

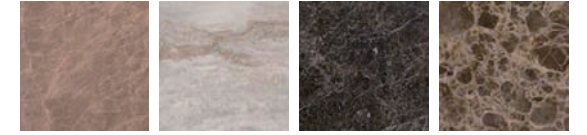
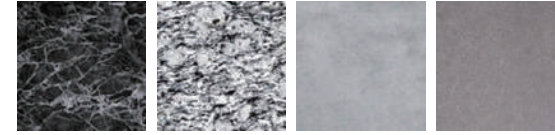
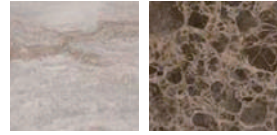
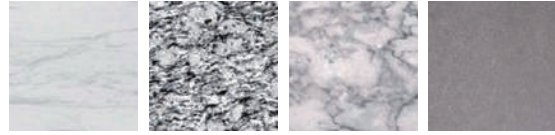


BSN-TK11NB BSN-TK11NBD BSO-TK11NRB BSO-TK11NRBD



# Hall Doors

Wall Color



Main Entrance



Other Entrance



## Venice

Door	Main	Fine Art (NFA-05)
	Other	Texcoat (Navy)
Transom		Texcoat (Navy)
Jamb	Main	Supervib (Silver)
	Other	Supervib (Silver)
Hall button	Main	BSM-TT44A
	Other	BSM-TT44AD
Indicator		HD-S-30D

## Athens

Door	Main	Hi-Touch (HT-01DG)
	Other	Supervib (Deep Gray)
Transom		Supervib (Silver)
Jamb	Main	Supervib (Silver)
	Other	Supervib (Silver)
Hall button	Main	BSN-TK11NB
	Other	BSN-TK11NBD
Indicator		HD-S-20D

## Inca

Door	Main	Silk metal (SP-03BR)
	Other	Silk metal (SP-03BR)
Transom		Supervib (Bronze)
Jamb	Main	Supervib (Bronze)
	Other	Supervib (Bronze)
Hall button	Main	BSK-TT44
	Other	BSK-TT44D
Indicator		HD-S-20D

## Manhattan

Door	Main	Hi-Touch (HT-01SV)
	Other	Supervib (Silver)
Transom		Supervib (Silver)
Jamb	Main	Supervib (Silver)
	Other	Supervib (Silver)
Hall button	Main	BSK-TT44
	Other	BSK-TT44D
Indicator		HD-S-20D

## Milano

Door	Main	STS Mirror, Hi-Vib + Laser Cutting (LM-20V)
	Other	Supervib (Gold)
Transom		Supervib (Silver)
Jamb	Main	Supervib (Silver)
	Other	Supervib (Silver)
Hall button	Main	BSM-TT44A
	Other	BSM-TT44AD
Indicator		HD-S-30D

## Bellagio

Door	Main	Hi-Touch (HT-03BR)
	Other	Silk metal (SP-02BR)
Transom		Supervib (Bronze)
Jamb	Main	Supervib (Bronze)
	Other	Supervib (Bronze)
Hall button	Main	BSO-TK11NRB
	Other	BSO-TK11NRBD
Indicator		HD-S-20D

## Firenze

Door	Main	Superteel(Bronze)+ Laser Graphic (ST-02BZ)
	Other	Silk metal (SP-02BR)
Transom		Supervib (Bronze)
Jamb	Main	Supervib (Bronze)
	Other	Supervib (Bronze)
Hall button	Main	BSO-TK11NRB
	Other	BSO-TK11NRBD
Indicator		HD-S-20D

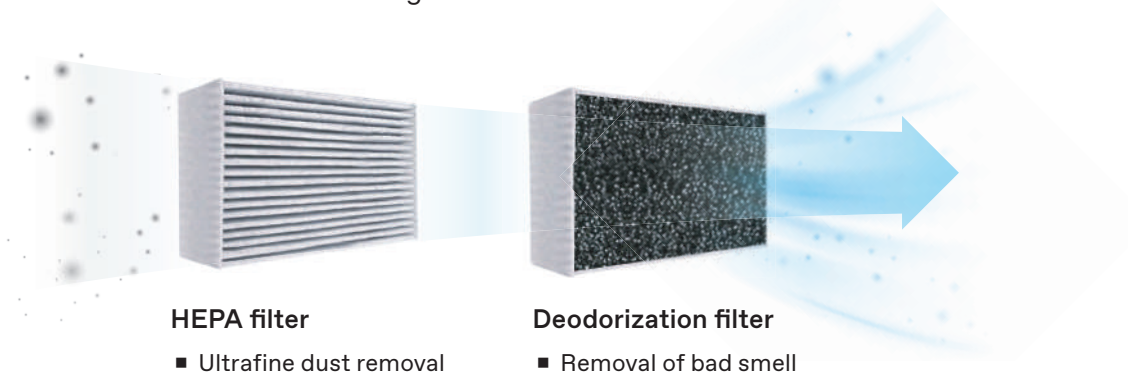


# Comfortable Atmosphere

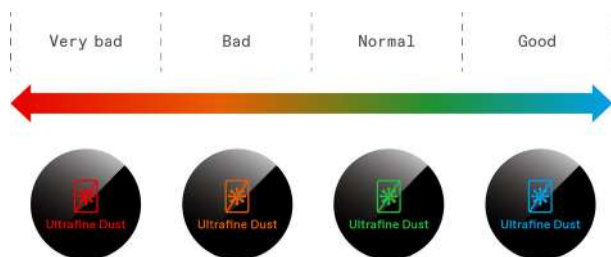


## Air conditioning and Purification System

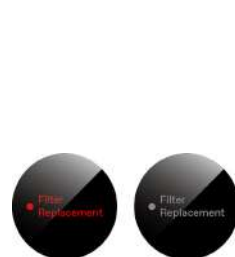
This system removes ultrafine dust and harmful gases inside the elevator cabins with HEPA filter.



## Purification of Ultrafine Dust



## Filter replacement notice



# Antibacterial Materials



## COVID-19 Clean material

With NCC (Nano-ceramic Color Coating) material to block germs from the elevator lobby to the inside of the car.



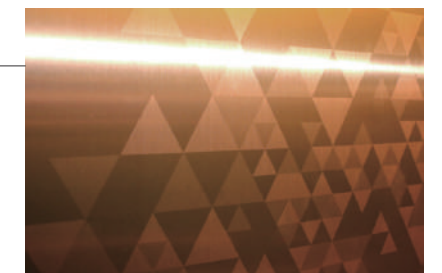
**Apply to**  
 Transom, Jamb, Front Panel, Side Panel



**Apply to**  
 Transom, Jamb, Side Panel



**Rear panel**





# Premium Options

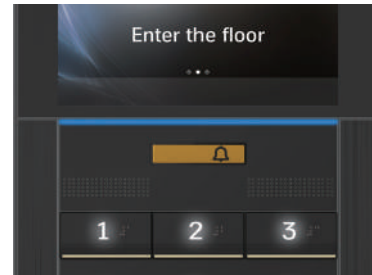


## Smart COP

Our Smart COP brings the elevator ride to the next level. With innovative features and a premium design, it provides a stylish passenger experience.



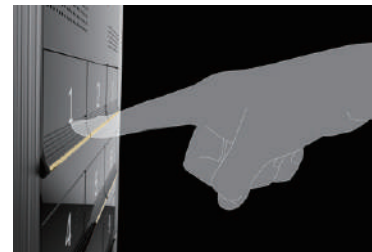
**10° Tilted screen**  
The 10° tilted screen limits reflections, so it's easier to read.



**Welcome light**  
When the doors are opening or closing, a blue welcome light blinks to alert the user.



**Two color buttons**  
The backlit keys turn blue when the destination is selected.



**Push type keyboard**  
Easy to use 10 digit push type keyboard.

## Innovative features

Built right into the Smart COP to give your passengers the best experience.



**Security**  
The embedded security camera with a 180° view of the cabin is accessible only to the building manager.



**Handwriting**  
Use your fingers to write your destination directly on the touch screen.



**RFID card reader**  
Use an RFID card or the contactless feature to directly access your floor.

## Touchless Button



Scan to see the button

## LED Hall Sill Flash

LED hall sills flash to indicate arrival and doors closing, supplementing hall lanterns and chimes for extra clarity. Intelligent in-car announcements are all fully adjustable to communicate cabin status clearly and calmly.

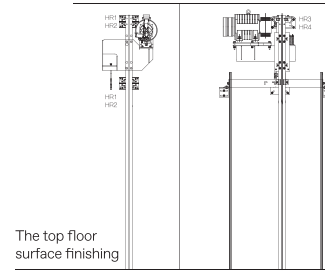


Scan to see hall sill

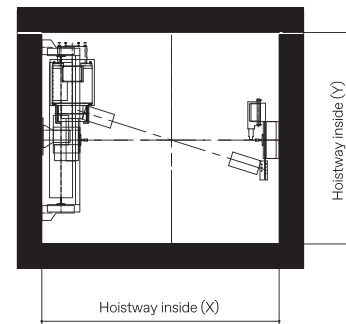


# Planning Information

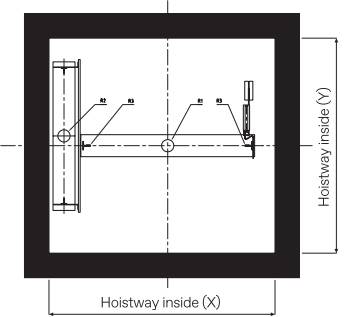
Overhead section



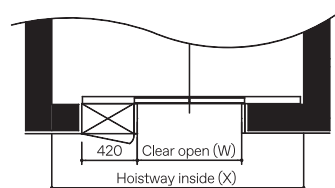
Overhead floor plan



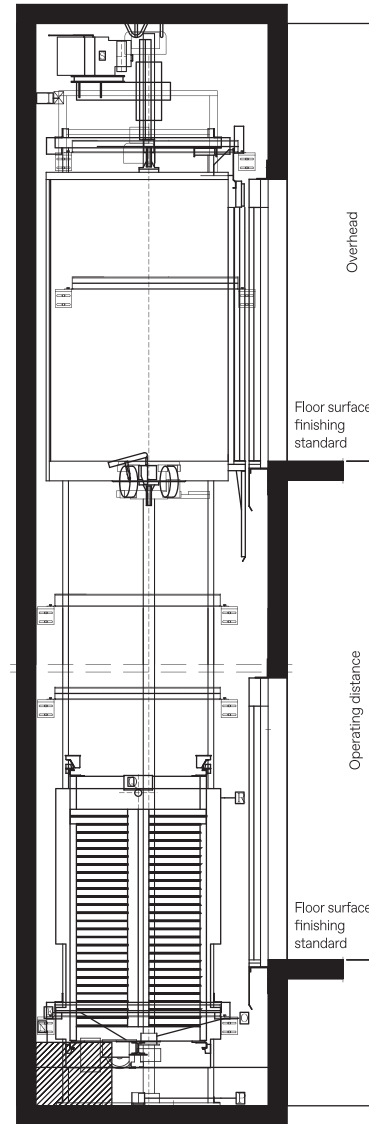
Pit floor plan



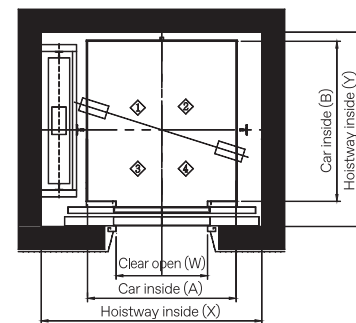
Detailed map of the three-sided top floor



Hoistway section



Hoistway floor plan



STANDARD SIZE (MINIMUM SIZE) & POWER CAPACITY

SPEED (M/S)	LOADING CAPACITY (KG)	DOOR OPENING (MM)	CAR SIZE (A×B) (MM)	CO SHAFT SIZE (X×Y) (MM)	2S SHAFT SIZE (X×Y) (MM)	MOTOR CAPACITY (KW)	MCCB CAPACITY (A)	HOOK APPLICATION LOAD (KG)
1.00	320	700 × 2100	850 × 1000	1600 × 1450	1440 × 1510	2.8		
	450		1000 × 1200	1750 × 1550	1630 × 1610			
	550 a		1100 × 1250	1800 × 1570	1680 × 1630			
	550 b		1200 × 1180	1850 × 1490	1780 × 1550	4.0		1500
	630 a	800 × 2100	1100 × 1400	1800 × 1710	1680 × 1770			
	630 b		1200 × 1250	1850 × 1570	1780 × 1630			
	680		1200 × 1350	1850 × 1690	1780 × 1750		20	
	750 a		1300 × 1400	1900 × 1710	1900 × 1770			
	750 b		1200 × 1450	1850 × 1760	1780 × 1820			
	800		1350 × 1400	2070 × 1710	1960 × 1770			
	900	900 × 2100	1600 × 1350	2200 × 1690	2230 × 1750	6.3		
	1000 a		1600 × 1400	2200 × 1710	2210 × 1800			
1000 b (Deep car)	800 × 2100 900 × 2100	1100 × 2100 1100 × 2100	1850 × 2410 2000 × 2410	1710 × 2470 1710 × 2470			3000	
1150 a	1000 × 2100	1800 × 1450	2400 × 1760	-				
1150 b	900 × 2100 1000 × 2100	1600 × 1650 1600 × 1650	2200 × 1960 2300 × 1960	-	8.0			
1200 a	1000 × 2100	1800 × 1450	2400 × 1760	-		40		
1200 b	900 × 2100 1000 × 2100	1600 × 1650 1600 × 1650	2200 × 1960 2300 × 1960	-	8.3			
1.50	550 a		1100 × 1250	1800 × 1570	1680 × 1630			
	550 b		1200 × 1180	1850 × 1490	1780 × 1550			
	630 a		1100 × 1400	1800 × 1710	1680 × 1770	6.0		1500
	630 b	800 × 2100	1200 × 1250	1850 × 1570	1780 × 1630			
	680		1200 × 1350	1850 × 1690	1780 × 1750			
	750 a		1300 × 1400	1900 × 1710	1900 × 1770			
	750 b		1200 × 1450	1850 × 1760	1780 × 1820			
	800		1350 × 1400	2070 × 1710	1960 × 1770			
	900	900 × 2100	1600 × 1350	2200 × 1690	2230 × 1750	9.5		
	1000 a		1600 × 1400	2200 × 1710	2210 × 1800		40	
	1000 b (Deep car)	800 × 2100 900 × 2100	1100 × 2100 1100 × 2100	1850 × 2410 2000 × 2410	1710 × 2470 1710 × 2470			3000
	1150 a	1000 × 2100	1800 × 1450	2400 × 1760	-			
1150 b	900 × 2100 1000 × 2100	1600 × 1650 1600 × 1650	2200 × 1960 2300 × 1960	-	12.0			
1200 a	1000 × 2100	1800 × 1450	2400 × 1760	-				
1200 b	900 × 2100 1000 × 2100	1600 × 1650 1600 × 1650	2200 × 1960 2300 × 1960	-	12.5			

Remark: These dimensions are valid for elevators following the EN81-20/50 code



MACHINE BEAM REACTION VALUE & PIT REACTION VALUE

UNIT: KG

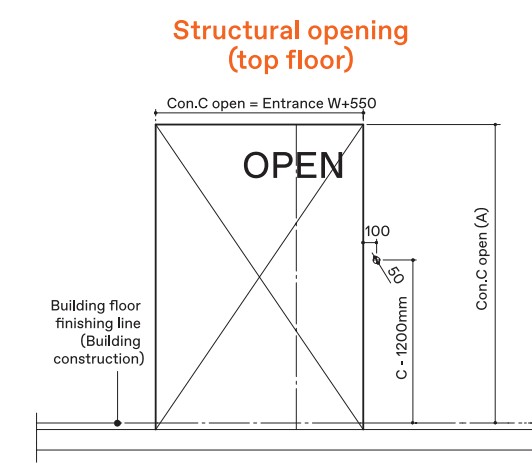
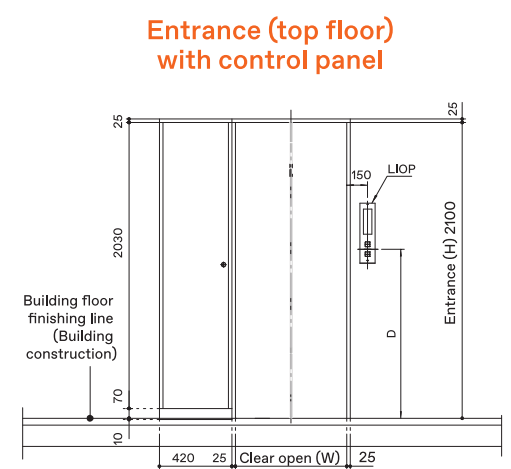
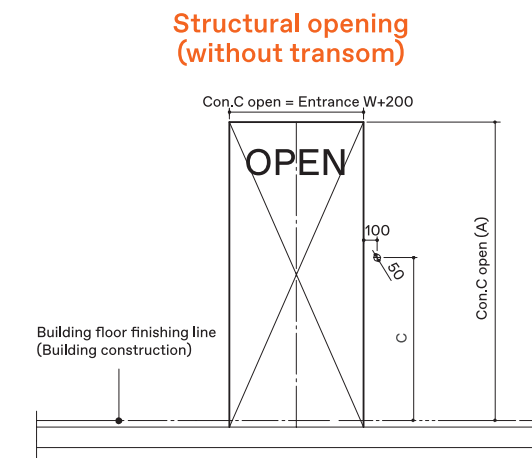
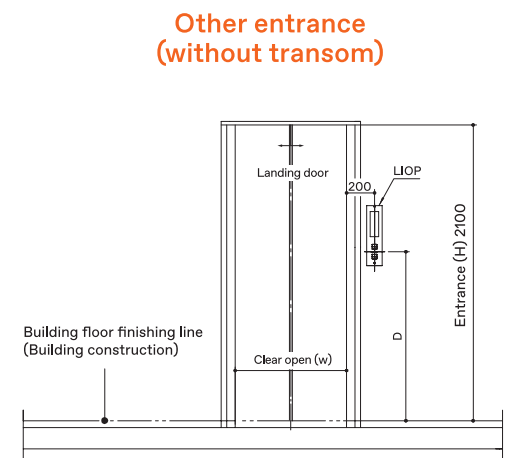
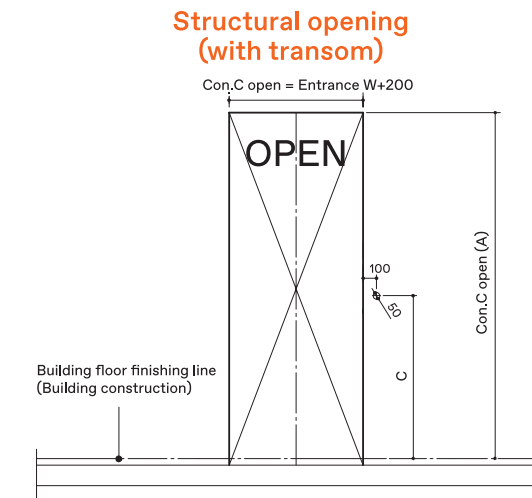
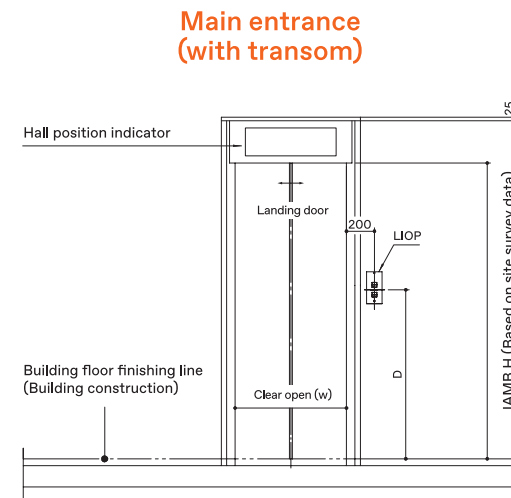
LOADING CAPACITY (KG)	GOV-AXIS CAPACITY (WALL-HORIZONTAL WEIGHT)	GOV-AXIS CAPACITY (WALL-VERTICAL WEIGHT)	TM-AXIS CAPACITY (WALL-HORIZONTAL WEIGHT)	TM-AXIS CAPACITY (WALL-VERTICAL WEIGHT)	CAR-AXIS BUFFER IMPULSE LOADING	CWT-AXIS BUFFER IMPULSE LOADING	CAR-AXIS IMPULSE LOADING AT EMERGENT STOP	GUIDE SHOE REACTION	
	HR1	HR2	HR3	HR4	R1	R2	R3	FX	FY
320					4430	3700	3500		
450					5230	4200	4000		
550 a					6100	4750	4520	88	90
550 b					6150	4790	4550		
630 a					6610	5070	4860		
630 b					6610	5070	4860		
680	650	300	1250	750	7290	5630	5320		
750 a					7790	5970	5740		
750 b					7670	5850	5650		
800					8460	6530	6180	175	225
900					9640	7470	6930		
1000 a					10140	7750	7220		
1000 b (Deep car)					10140	7750	7220		
1150 a					10770	8030	7550	215	260
1150 b	800	450	1500	900	10980	8120	7660		
1200 a									

OVERHEAD & PIT

SPEED (M/S)	OVERHEAD* (MM)		PIT (MM)
	BELOW 1000KG	EXCEED 1000KG	
1.00	3800	3900	1150
1.50	3900	4000	1500

\*The overhead size needs to be adjusted when an air-conditioner is added to the car.  
Remark: Marble floor and air-conditioner cannot be installed at the same time due to load limit.

# Entrance



	WITH TRANSOM	WITHOUT TRANSOM	FOR THE DISABLED
Opening area height (A)	2500mm	2200mm	-