

enta200

STEP INTO MOMENTS
OF STYLE

MOVE BEYOND

TK Elevator Korea

MOVES PEOPLE
- THE FUTURE OF URBAN MOBILITY

enta200: step into moments of style

Stylish and practical, enta200 has been engineered to meet the needs of low-rise residential and commercial applications. Stylish cabin designs combine with the practical features of this machineroom-less elevator to provide a comfortable ride and add value to your project.

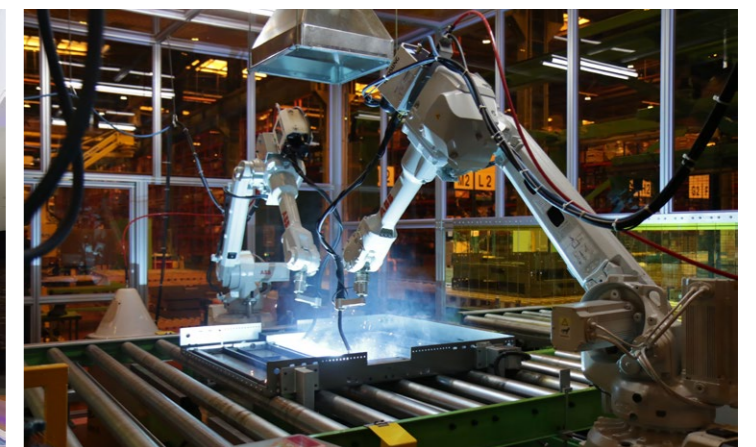


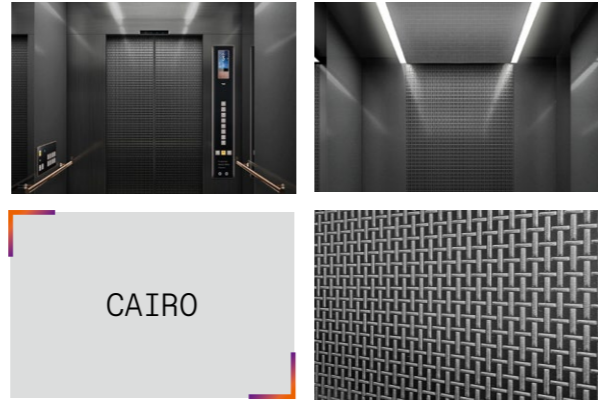
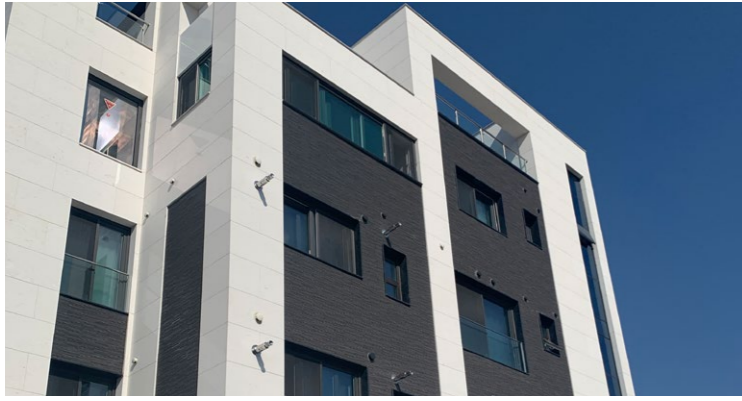
Cheonan Elevator Campus

TKE Korea's Cheonan Plant is a smart factory with an annual production capacity of 20,000 units. The factory has not only elevator production facilities, but also training, culture, and sports facilities, that's why we call it elevator campus.

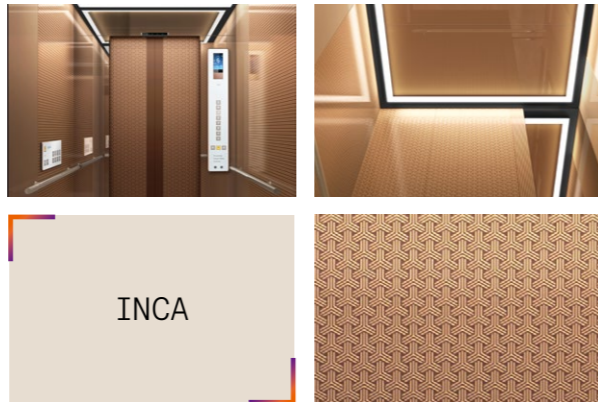
We have...

- SMART FACTORY** Fully-automated production system based on IoT and big data
- TRAINING CENTER** Seed Campus for the training for employees and partner's employees
- CULTURE SPACE** Mini theater, café and customer showroom
- SPORTS FACILITIES** Indoor golf, table tennis, gym, basketball and volleyball facilities

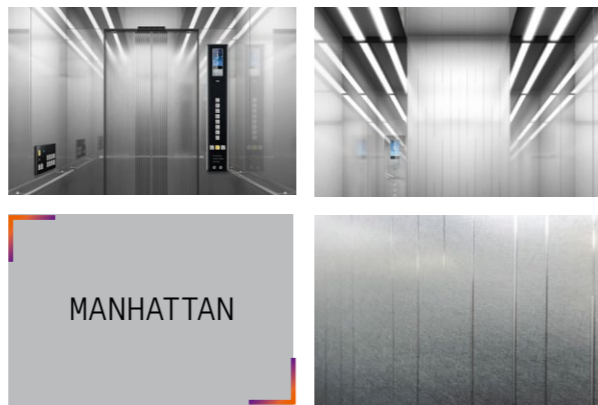
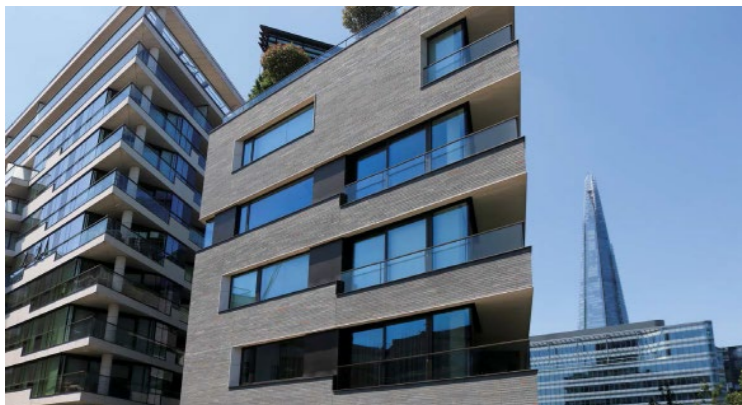




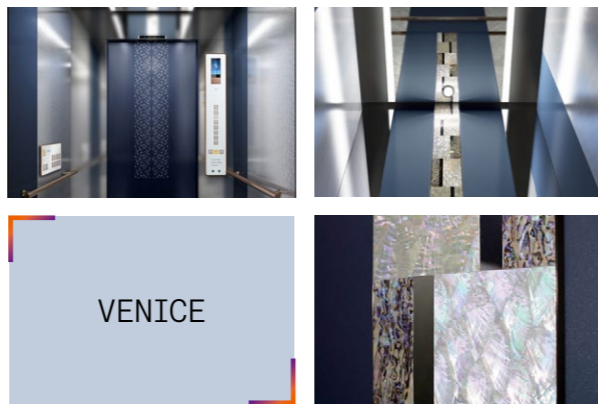
CAIRO



INCA



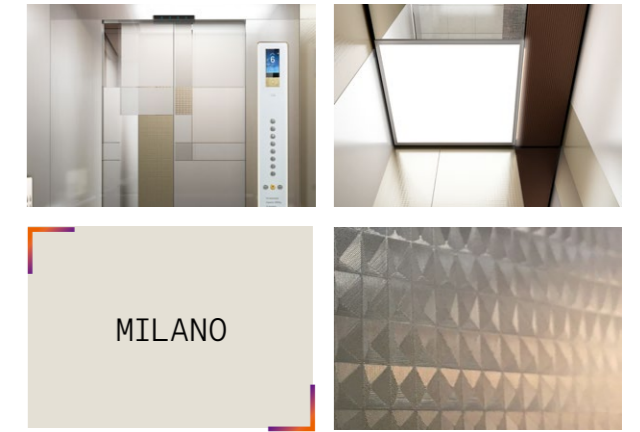
MANHATTAN



VENICE



ATHENS

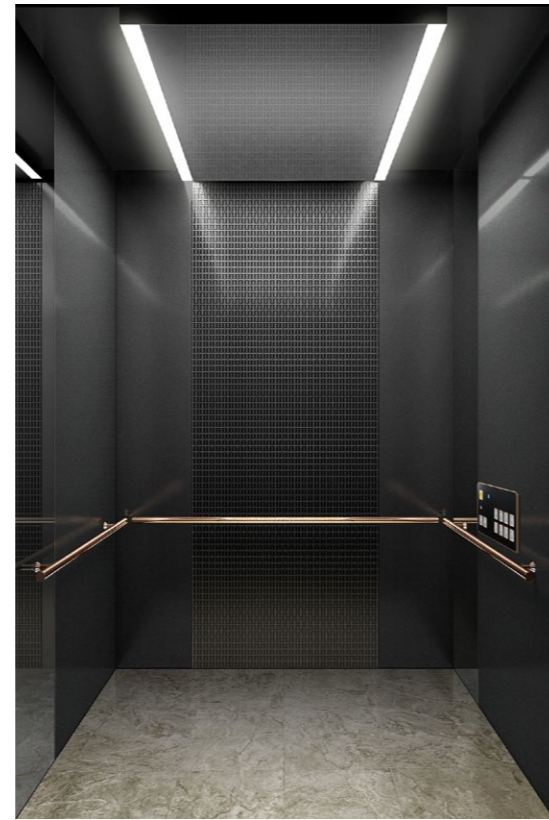


MILANO



FIRENZE

CAIRO



CABIN DESIGN

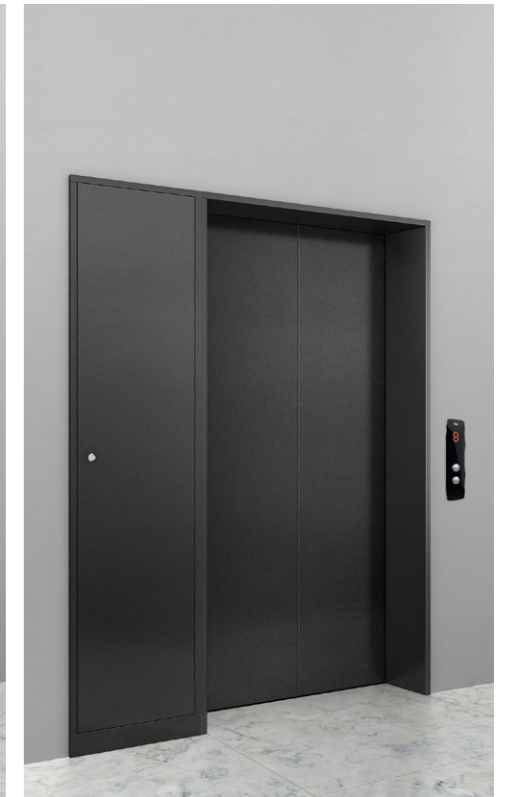
Ceiling	CE-SE2C
Wall	Glow Metal (Lux Black), EMBO Pattern (EM08G), Pearl Coat (Gem Black), STS Mirror
Door	EMBO Pattern (EM08DG)
COP	DS-K-TK11NSB HAS-K-TK11NSB (for disabled)
Handrail	HRR-01B
Floor	DET6240



Main entrance



Other entrance

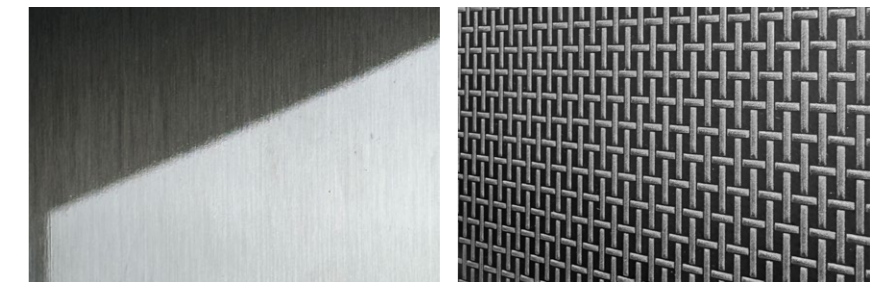


Entrance with control panel

HALL DESIGN

Door	Main	EMBO Pattern (EM08DG)
	Other	Pearl Coat (Gem Black)
Transom		Pearl Coat (Gem Black)
Jamb	Main	Pearl Coat (Gem Black)
	Other	Pearl Coat (Gem Black)
Hall button	Main	BSK-TK77
	Other	BSK-TK77D
Indicator		HD-S-20D
Control Panel		Pearl Coat (Gem Black)

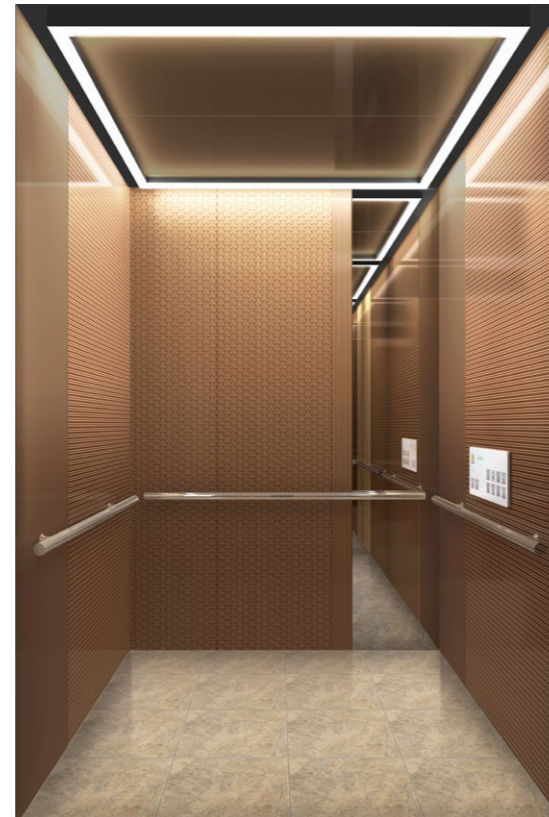
Material feature



A black design that combines the beauty of a tranquil desert with a modern sense.

* The printed color could be different from the actual object.

INCA



CABIN DESIGN

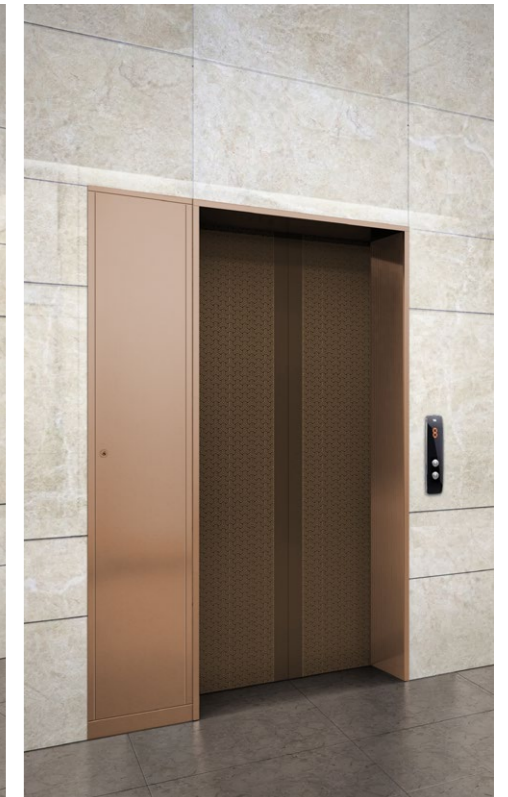
Ceiling	CE-SD2C
Wall	STS Mirror, Silk Metal (SP-04BR), Silk Metal (SP-05BR), Powder Coat (Inca brown)
Door	Silk Metal (SP-03BR)
COP	DS-J-TK11NSB HAS-J-TK11NSB (for disabled)
Handrail	HRR-01G
Floor	DET6240



Main entrance



Other entrance

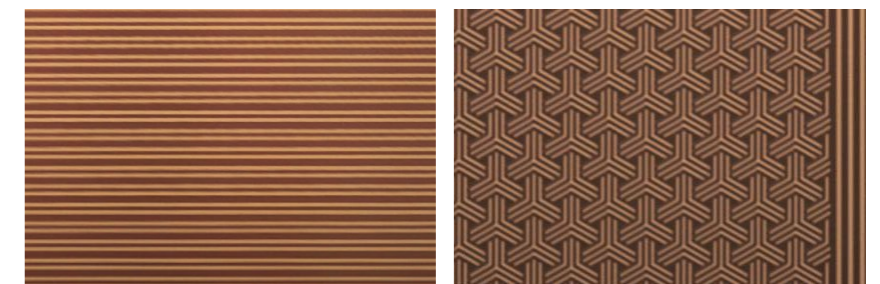


Entrance with control panel

HALL DESIGN

Door	Main	Silk Metal (SP-03BR)
	Other	Silk Metal (SP-03BR)
Transom		INOXTEEL (Bronze)
Jamb	Main	INOXTEEL (Bronze)
	Other	INOXTEEL (Bronze)
Hall button	Main	BSK-TK77
	Other	BSK-TK77D
Indicator		HD-S-20D
Control Panel		INOXTEEL (Bronze)

Material feature



Classical design inspired by the ancient Inca Empire.

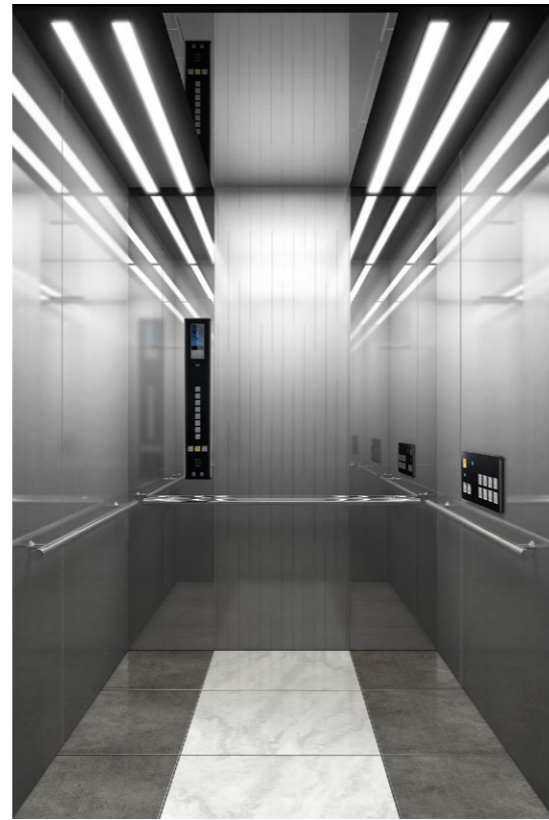


HRE-01A

Handrail
(one rear side)

* The printed color could be different from the actual object.

MANHATTAN



CABIN DESIGN

Ceiling	CE-SA1C
Wall	STS Mirror, NFS (Silver), Hi-Touch (Rain)
Door	Hi-Touch (HT-01SV)
COP	DS-H-TK11N HAS-H-TK11N (for disabled)
Handrail	HRR-01G
Floor	DET6239 / DET2905



Main entrance



Other entrance

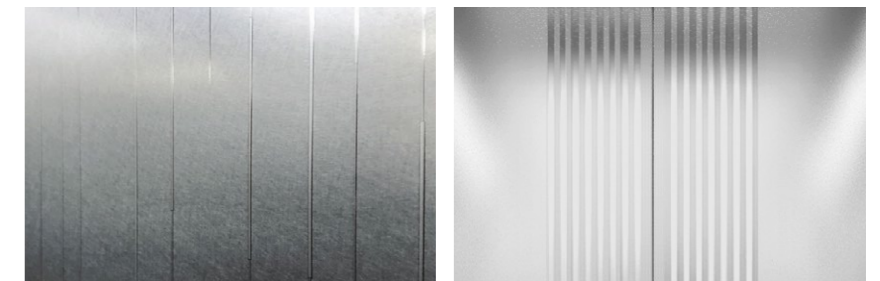


Entrance with control panel

HALL DESIGN

Door	Main	NFS (Silver) + Laser Graphic (LM-27)
	Other	NFS (Silver)
Transom		NFS (Silver)
Jamb	Main	NFS (Silver)
	Other	NFS (Silver)
Hall button	Main	BSK-TK77
	Other	BSK-TK77D
Indicator		HD-S-20D
Control Panel		NFS (Silver)

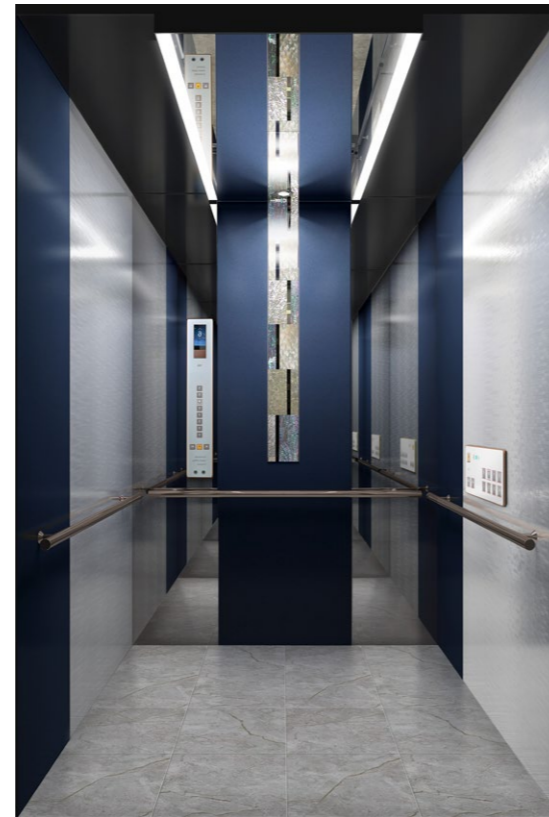
Material feature



Silver, mirrors and steel. Urban sensibility with a New York attitude.

* The printed color could be different from the actual object.

VENICE



CABIN DESIGN

Ceiling	CE-SE1C
Wall	STS Mirror, NFS (Silver), Texcoat (Navy) + Seashell panel, Texcoat (Navy), Fine Art (NFA-04)
Door	Fine Art (NFA-05)
COP	DS-J-TK11NSB HAS-J-TK11NSB (for disabled)
Handrail	HRR-01B
Floor	DET6258



Main entrance



Other entrance

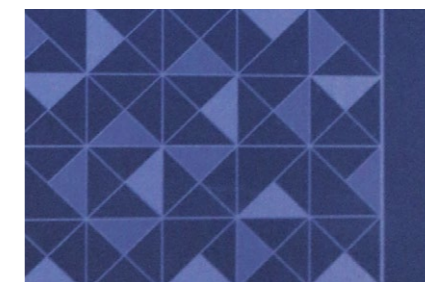


Entrance with control panel

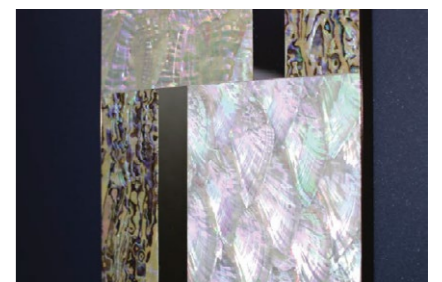
HALL DESIGN

Door	Main	Fine Art (NFA-05)
	Other	Texcoat (Navy)
Transom		NFS (Silver)
Jamb	Main	NFS (Silver)
	Other	NFS (Silver)
Hall button	Main	BSM-TK77G
	Other	BSM-TK77GD
Indicator		HD-S-30D
Control Panel		NFS (Silver)

Material feature



Rich blues express the city's timeless link with the sea.



An abstract twist on mother-of-pearl and glass adds Venetian sophistication.



HRE-01B

Handrail
(one rear side)

* The printed color could be different from the actual object.

ATHENS



CABIN DESIGN

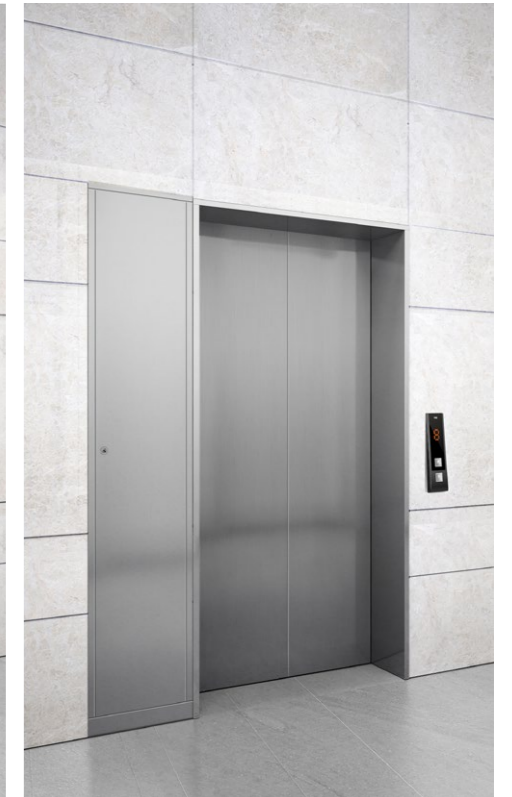
Ceiling	CE-SE1C
Wall	STS Mirror, NFS (Deep Gray), Hi-Touch (HT-02DG)
Door	Hi-Touch (HT-01DG)
COP	DS-K-TK11NSB HAS-K-TK11NSB (for disabled)
Handrail	HRR-01B
Floor	DET6272



Main entrance



Other entrance



Entrance with control panel

HALL DESIGN

Door	Main	NFS (Deep Gray) + Laser Graphic (LM-27)
	Other	NFS (Deep Gray)
Transom		NFS (Silver)
Jamb	Main	NFS (Silver)
	Other	NFS (Deep Gray)
Hall button	Main	BSN-TK11N
	Other	BSN-TK11ND
Indicator		HD-S-20D
Control Panel		NFS (Deep Gray)

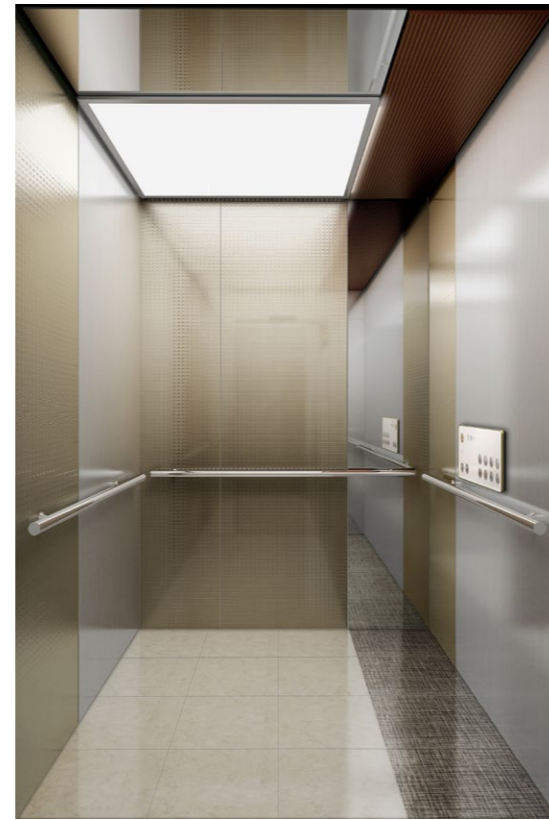
Material feature



Modern design expressing the magnificence and mysteriousness of ancient cities.

* The printed color could be different from the actual object.

MILANO



CABIN DESIGN

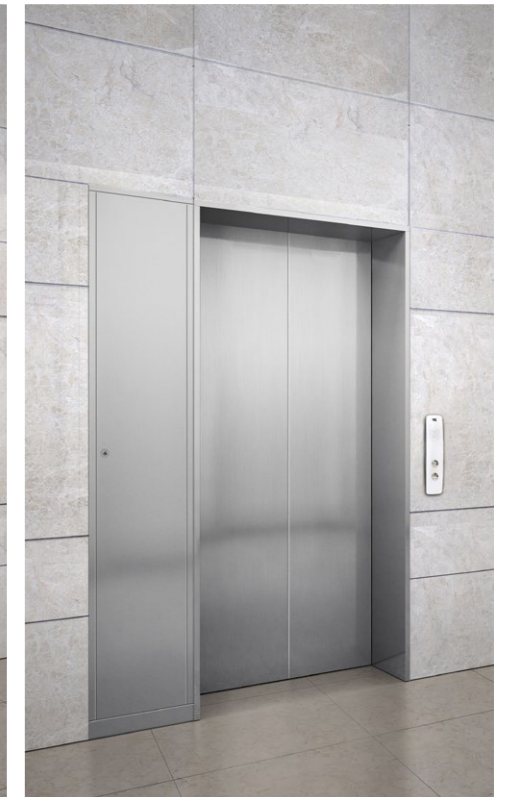
Ceiling	FX-01
Wall	STS Mirror, NFS (Silver), Hi-Touch (Gold)
Door	STS Mirror, Hi-Vib, Bead + Laser Cutting (LM-20VB)
COP	DS-G-TK77G HAS-G-TK77G (for disabled)
Handrail	HRR-01G
Floor	DET2991 / DET2494



Main entrance



Other entrance

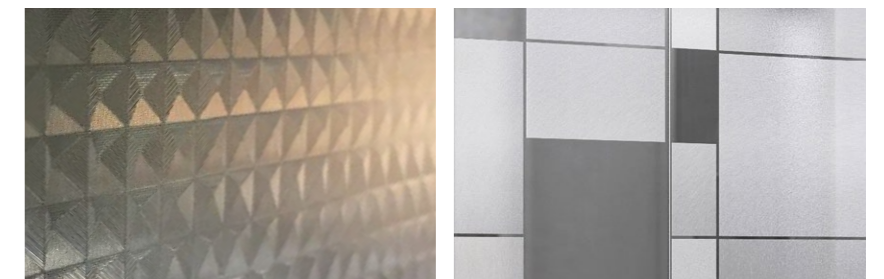


Entrance with control panel

HALL DESIGN

Door	Main	STS Mirror, Hi-Vib + Laser Cutting (LM-20V)
	Other	NFS (Silver)
Transom		STS Art Hairline
Jamb	Main	STS Art Hairline
	Other	NFS (Silver)
Hall button	Main	BSM-TK77G
	Other	BSM-TK77GD
Indicator		HD-S-30D
Control Panel		NFS (Silver)

Material feature



Classic earth tones and patterns influenced by Mondrian.

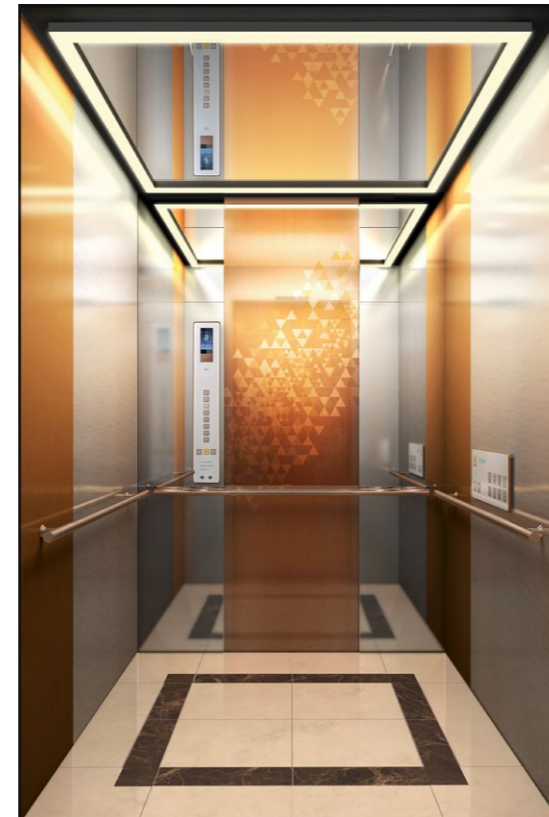


HRE-01E

Handrail
(one rear side)

* The printed color could be different from the actual object.

FIRENZE



CABIN DESIGN

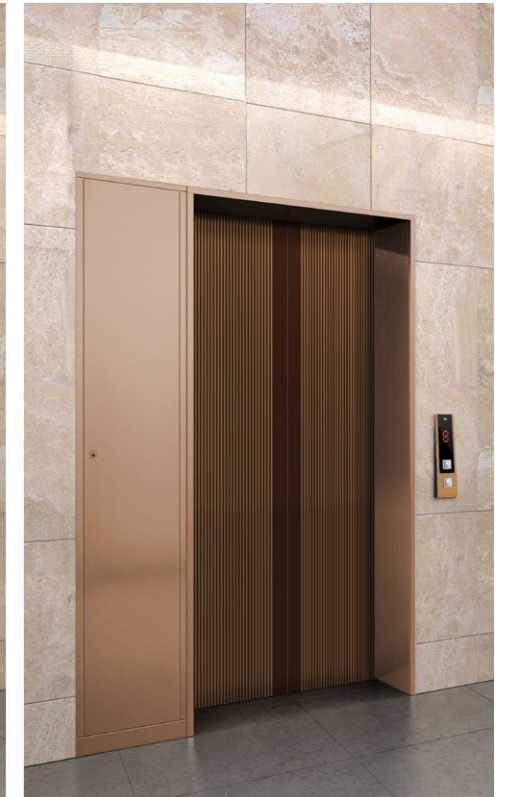
Ceiling	CE-SD3W
Wall	STS Mirror, NFS (Silver), Fine Art (NFA-04), Glam Metal (Bronze) + Laser Graphic (GM-02BZ), Glam Metal (Bronze)
Door	Glam Metal (Bronze) + Laser Graphic (GM-01BZ)
COP	DS-J-TK11NSB HAS-J-TK11NSB (for disabled)
Handrail	HRR-01B
Floor	DET2251 / DET2245



Main entrance



Other entrance

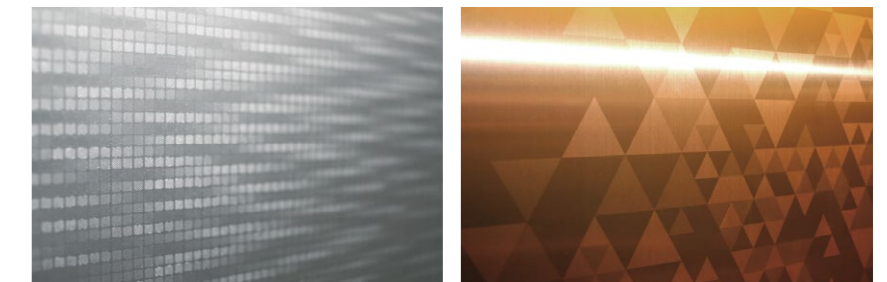


Entrance with control panel

HALL DESIGN

Door	Main	Glam Metal (Bronze) + Laser Graphic (GM-01BZ)
	Other	Silk Metal (SP-02BR)
Transom		INOXTEEL (Bronze)
Jamb	Main	INOXTEEL (Bronze)
	Other	INOXTEEL (Bronze)
Hall button	Main	BSO-TK11N
	Other	BSO-TK11ND
Indicator		HD-S-20D
Control Panel		INOXTEEL (Bronze)

Material feature



Inspired by night views of the Ponte Vecchio in Florence, this chic design is right up-to-date.



HRE-01B

Handrail (one rear side)

* The printed color could be different from the actual object.

Stylish COP

With a focus on usability, the colorful LCD display makes information easier to read. The image moves in the direction of the elevator to give a reassuring 'visual sense' of movement.

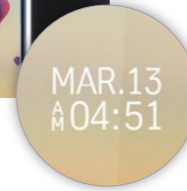


Dynamic TFT LCD

Crystal clear, vibrant graphics put passengers at ease and guide them to their destination.

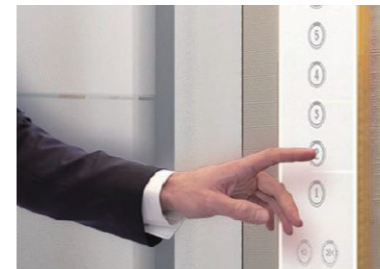


Scan to dynamic LCD



Attractive details

For a better design, we pay attention to the small details.



Anodized frame



Backlight



High quality sound

New color material

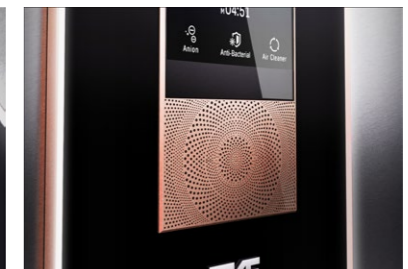
Aluminum material with rose brown color



Frame



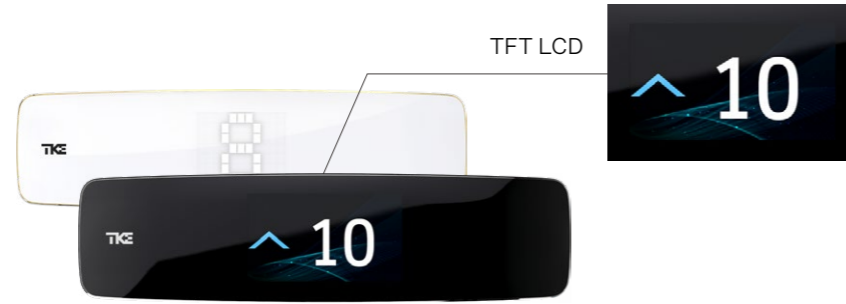
Button



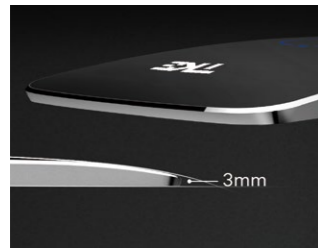
Speaker

LOP & LIOP

Unlike conventional flat fixture designs, these curved hall buttons have been meticulously designed to enhance the premium quality of any building. They deliver a superior user experience in terms of both look and feel.



Slim Look



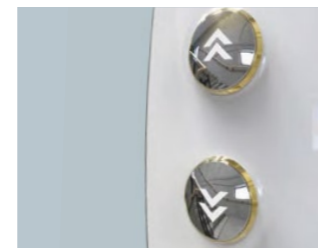
Designed for an enhanced sense of proportion.

Touch button



Simplified UP/DOWN graphic design and state-of-the-art touch button.

Push button



Rounded button design in stylish sapphire-white.

Push button LOP / LIOP



Fixtures

COP



DS-F-TT22 DS-G-TK77G DS-J-TK11NSB DS-H-TK11N DS-K-TK11NSB

Indicator



HD-S-20D HD-S-30D

TFT LCD (Option)



HD-S-20L HD-S-30L

LOP / LIOP



BSM-TT44A BSM-TT44AD BSM-TK77G BSM-TK77GD BSM-TT44AL BSM-TK77GL

TFT LCD (Option)

COP assisting the disabled



HAS-H-TK11N HAS-G-TK77G



HAS-K-TK11NSB HAS-J-TK11NSB

TFT LCD (Option)



BSK-TT44 BSK-TT44D BSK-TK77 BSK-TK77D BSK-TT44L BSK-TK77L

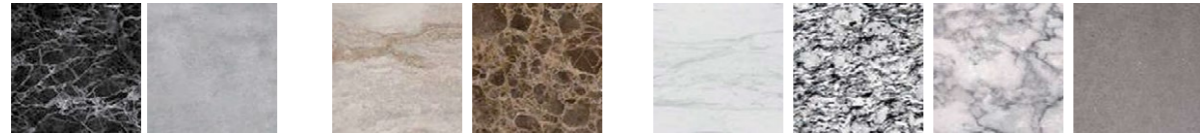


BSN-TK11N BSN-TK11ND BSO-TK11N BSO-TK11ND

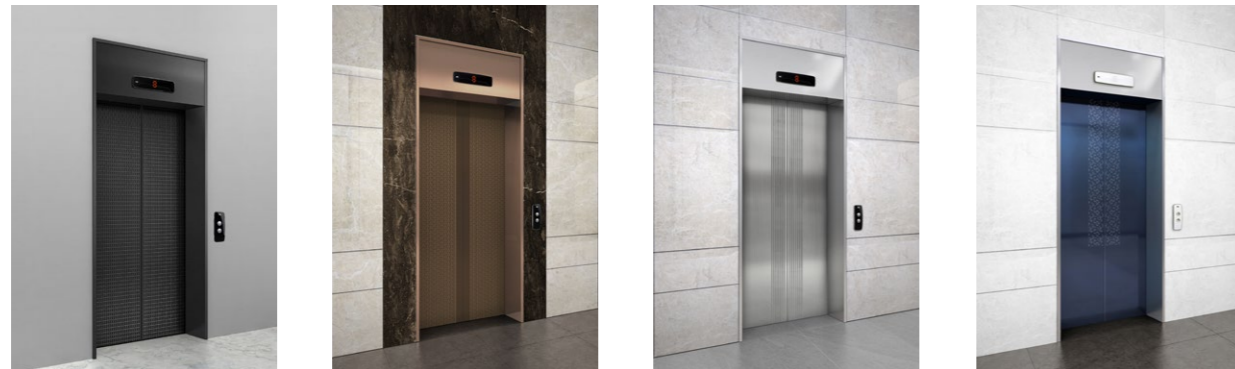
* Touch button can be applied for only white color COP up to 8 floors

Hall Doors

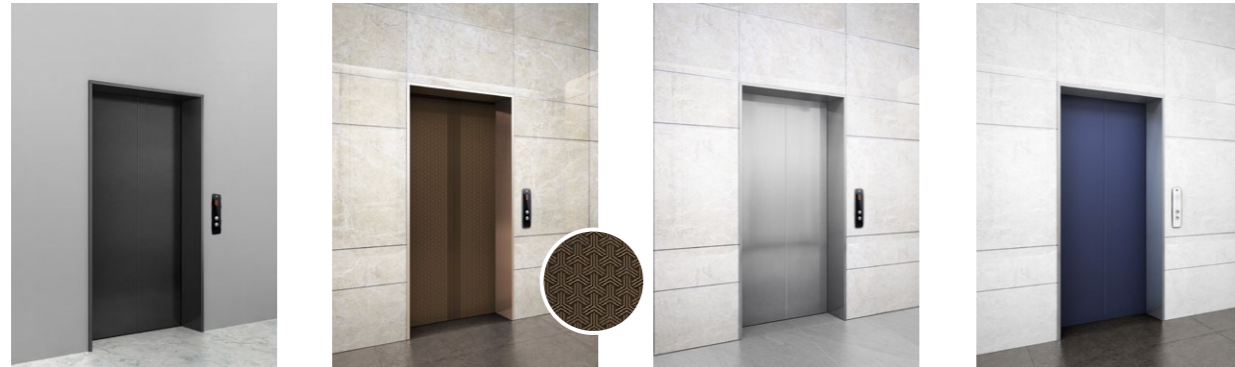
Wall Color



Main Entrance



Other Entrance



Cairo

Door	Main	EMBOPattern(EM08DG)
	Other	Pearl Coat (Gem Black)
Transom		Pearl Coat (Gem Black)
Jamb	Main	Pearl Coat (Gem Black)
	Other	Pearl Coat (Gem Black)
Hall button	Main	BSK-TK77
	Other	BSK-TK77D
Indicator		HD-S-20D

Inca

Door	Main	Silk Metal (SP-03BR)
	Other	Silk Metal (SP-03BR)
Transom		INOXTEEL (Bronze)
Jamb	Main	INOXTEEL (Bronze)
	Other	INOXTEEL (Bronze)
Hall button	Main	BSK-TK77
	Other	BSK-TK77D
Indicator		HD-S-20D

Manhattan

Door	Main	NFS (Silver) + Laser Graphic (LM-27)
	Other	NFS (Silver)
Transom		NFS (Silver)
Jamb	Main	NFS (Silver)
	Other	NFS (Silver)
Hall button	Main	BSK-TK77
	Other	BSK-TK77D
Indicator		HD-S-20D

Venice

Door	Main	Fine Art (NFA-05)
	Other	Texcoat (Navy)
Transom		NFS (Silver)
Jamb	Main	NFS (Silver)
	Other	NFS (Silver)
Hall button	Main	BSM-TK77G
	Other	BSM-TK77GD
Indicator		HD-S-30D

Athens

Door	Main	NFS (Deep Gray) + Laser Graphic (LM-27)
	Other	NFS (Deep Gray)
Transom		NFS (Silver)
Jamb	Main	NFS (Silver)
	Other	NFS (Deep Gray)
Hall button	Main	BSN-TK11N
	Other	BSN-TK11ND
Indicator		HD-S-20D

Milano

Door	Main	STS Mirror, Hi-Vib + Laser Cutting (LM-20V)
	Other	NFS (Silver)
Transom		STS Art Hairline
Jamb	Main	STS Art Hairline
	Other	NFS (Silver)
Hall button	Main	BSM-TK77G
	Other	BSM-TK77GD
Indicator		HD-S-30D

Firenze

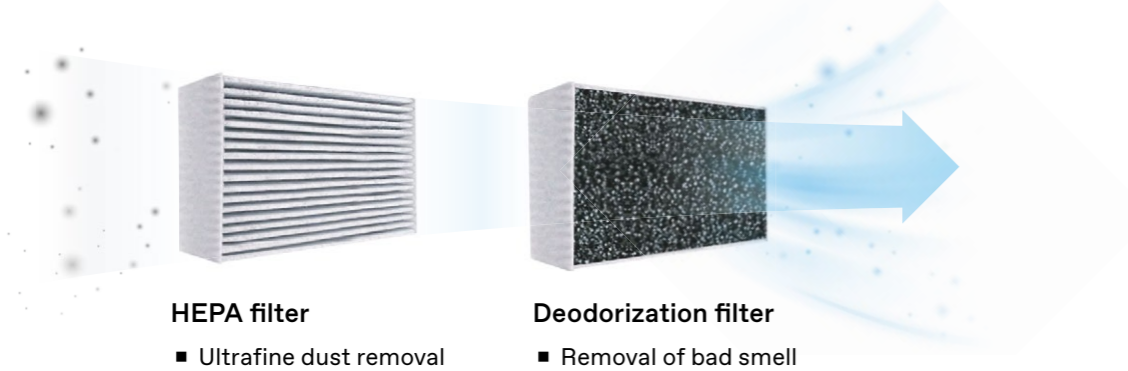
Door	Main	Glam Metal (Bronze) + Laser Graphic (GM-01BZ)
	Other	Silk Metal (SP-02BR)
Transom		INOXTEEL (Bronze)
Jamb	Main	INOXTEEL (Bronze)
	Other	INOXTEEL (Bronze)
Hall button	Main	BSO-TK11N
	Other	BSO-TK11ND
Indicator		HD-S-20D

Comfortable Atmosphere

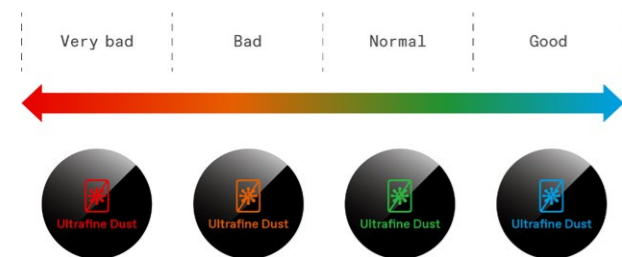


Air conditioning and Purification System

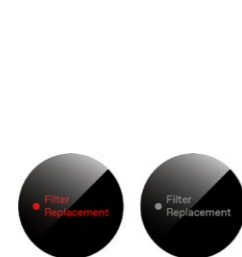
This system removes ultrafine dust and harmful gases inside the elevator cabins with HEPA filter.



Purification of Ultrafine Dust



Filter replacement notice



Premium Options

Smart COP

Our Smart COP brings the elevator ride to the next level. With innovative features and a premium design, it provides a stylish passenger experience.

10° Tilted screen
The 10° tilted screen limits reflections, so it's easier to read.

Welcome light
When the doors are opening or closing, a blue welcome light blinks to alert the user.

Two color buttons
The backlit keys turn blue when the destination is selected.

Innovative features
Built right into the Smart COP to give your passengers the best experience.

Security
The embedded security camera with a 180° view of the cabin is accessible only to the building manager.

Handwriting
Use your fingers to write your destination directly on the touch screen.

RFID card reader
Use an RFID card or the contactless feature to directly access your floor.

LED Hall Sill Flash

LED hall sills flash to indicate arrival and doors closing, supplementing hall lanterns and chimes for extra clarity. Intelligent in-car announcements are all fully adjustable to communicate cabin status clearly and calmly.

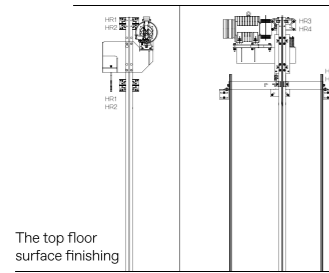


Scan to see hall sill

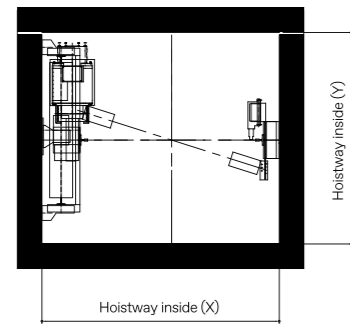


Planning Information

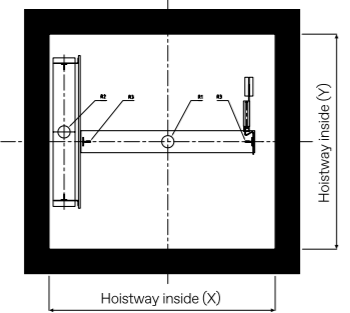
Overhead section



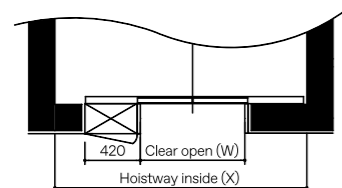
Overhead plan



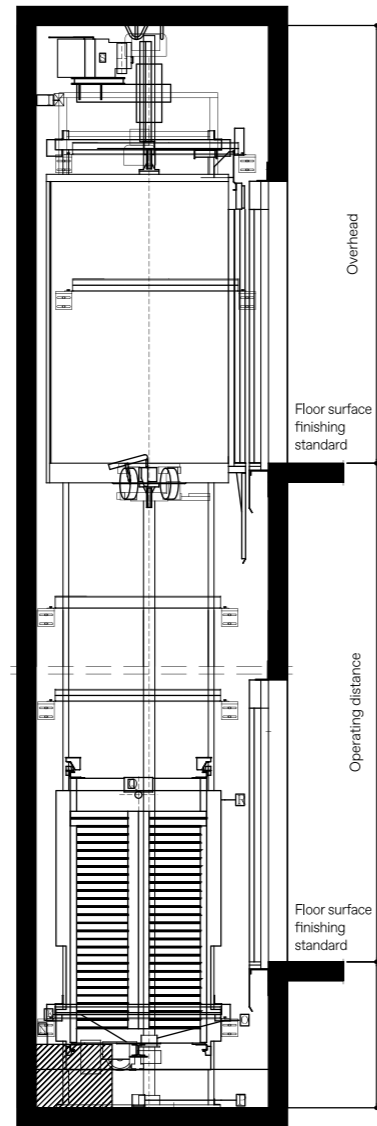
Pit plan



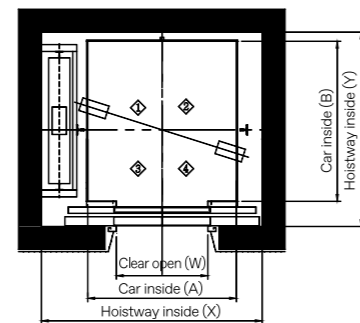
Top floor plan



Hoistway section



Hoistway plan



STANDARD SIZE (MINIMUM SIZE) & POWER CAPACITY

SPEED (m/s)	LOADING CAPACITY (kg)	DOOR OPENING (mm)	CAR SIZE (AxB) (mm)	CO SHAFT SIZE (XxY) (mm)	MOTOR CAPACITY (kW)	MCCB CAPACITY (A)	HOOK APPLICATION LOAD (kg)	
1.00	320	700x2100	850x1000	1625x1450	3.7	20	1500	
	450	700x2100	1000x1200	1700x1550		30		
	550a	800x2100	1100x1250	1850x1570		30		
	550b	800x2100	1200x1180	1900x1490		30		
	630a	800x2100	1100x1400	1850x1710		30		
	630b	800x2100	1200x1250	1900x1570		30		
	680	800x2100	12000x1350	1885x1690	30			
	750a	800x2100	1300x1400	1935x1710	5.2	30	3000	
	750b	800x2100	1200x1450	1885x1760		30		
	800	900x2100	1350x1400	2070x1710		30		
	900	900x2100	1600x1350	2200x1690		30		
	1000a	900x2100	1600x1400	2200x1710		6.5		30
1000b	800x2100	1100x2100	1850x2410	40				
1150a	1000x2100	1800x1450	2400x1760	7.5	40	3000		
1150b	900/1000x2100	1600x1450	2200/2300x1960		40			
1200a	1000x2100	1800x1450	2400x1760		40			
1200b	900/1000x2100	1600x1650	2200/2300x9160		40			
550a	800x2100	1100x1250	1850x1570		5.6		30	1500
550b	800x2100	1200x1180	1900x1490				30	
630a	800x2100	1100x1400	1850x1710	30				
630b	800x2100	1200x1250	1900x1570	30				
680	800x2100	12000x1350	1885x1690	30				
750a	800x2100	1300x1400	1935x1710	7.8		40	3000	
750b	800x2100	1200x1450	1885x1760		40			
800	900x2100	1350x1400	2070x1710		40			
900	900x2100	1600x1350	2200x1690		40			
1000a	900x2100	1600x1400	2200x1710		9.7	40		
1000b	800x2100	1100x2100	1850x2410			40		
1150a	1000x2100	1800x1450	2400x1760	11.2	40	3000		
1150b	900/1000x2100	1600x1450	2200/2300x1960		40			
1200a	1000x2100	1800x1450	2400x1760		50			
1200b	900/1000x2100	1600x1650	2200/2300x9160		50			
680	800x2100	12000x1350	1885x1790		7.37		40	3000
750a	800x2100	1300x1400	1935x1810				40	
750b	800x2100	1200x1450	1885x1860	9.1		40		
800	900x2100	1350x1400	2070x1810			40		
900	900x2100	1600x1350	2200x1790	11.4		40		
1000a	900x2100	1600x1400	2200x1810			50		
1000b	800x2100	1100x2100	1850x2510	13.1	50	3000		
1150a	1000x2100	1800x1450	2400x1860		50			
1150b	900/1000x2100	1600x1450	2200/2300x2060		50			
1200a	1000x2100	1800x1450	2400x1860		50			
1200b	900/1000x2100	1600x1650	2200/2300x2060		50			

* These dimensions are valid for elevators following the EN81-20/50 code.

MACHINE BEAM REACTION VALUE & PIT REACTION VALUE

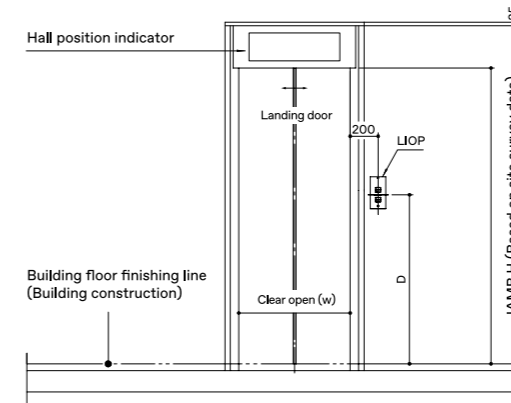
LOADING CAPACITY (kg)	GOV-AXIS CAPACITY (WALL-HORIZONTAL WEIGHT)	GOV-AXIS CAPACITY (WALL-VERTICAL WEIGHT)	TM-AXIS CAPACITY (WALL-HORIZONTAL WEIGHT)	TM-AXIS CAPACITY (WALL-VERTICAL WEIGHT)	CAR-AXIS BUFFER IMPACT LOAD	CWT-AXIS BUFFER IMPACT LOAD	CAR-AXIS IMPACT LOAD AT EMERGENCY STOP	GUIDE SHOE REACTION	
	HR1	HR2	HR3	HR4	R1	R2	R3	Fx	Fy
320					5230	4200	4000		
450					6100	4750	4520	88	90
550					6150	4790	4550		
630					6610	5070	4860		
680	650	300	650	350	7290	5630	5320		
750					7790	5970	5740		
750					7670	5850	5650	175	225
800					8460	6530	6180		
900					9640	7470	6930		
1000					10140	7750	7220		
1150	800	450	800	450	10770	8030	7550	215	260
1200	800	450	1500	950	10980	8120	7660	215	260

OVERHEAD & PIT

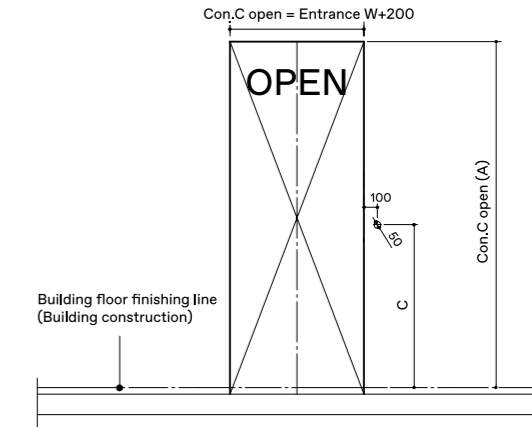
SPEED(m/s)	LOADING CAPACITY(kg)	OVERHEAD(mm)	PIT(mm)
1.00	320	3800	1200
	450-680	3800	
	750-1000	3800	
	1150-1200	3900	
1.50	550-680	3900	1500
	750-1000	3900	
	1150-1200	4000	
1.75	680	4100	1550
	750-1000	4000	
	1150-1200	4100	

Entrance

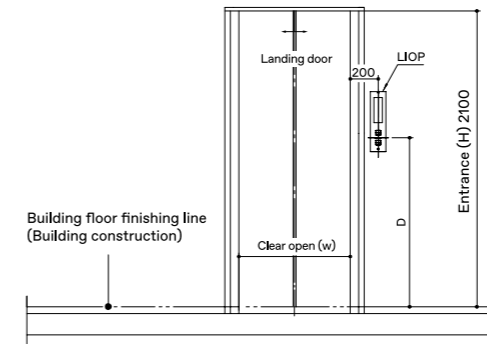
Main entrance (with transom)



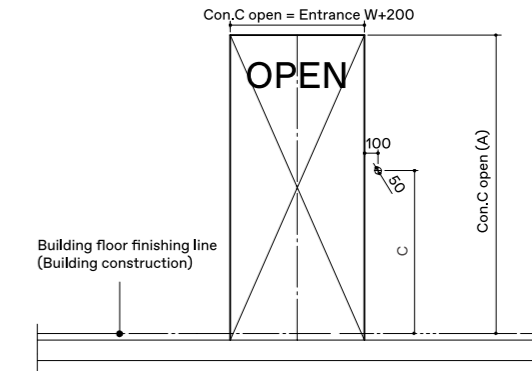
Structural opening (with transom)



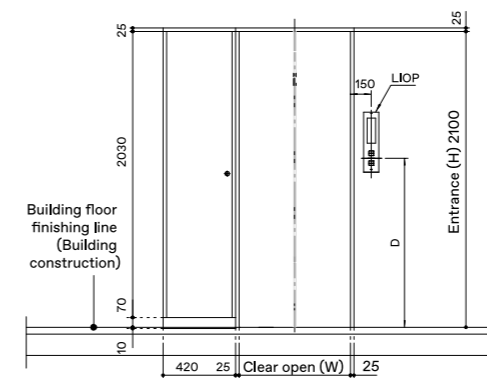
Other entrance (without transom)



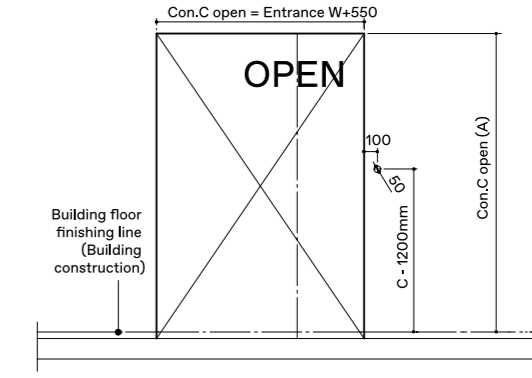
Structural opening (without transom)



Entrance (top floor) with control panel



Structural opening (top floor)



	WITH TRANSOM	WITHOUT TRANSOM	FOR THE DISABLED
Opening area height (A)	2500mm	2200mm	-

TK Elevator Korea Ltd.

25 World Cup buk-ro 54-gil, Mapo-gu, Seoul, 03924, Korea
P +82-2-2610-7510, 7772



TKELEVATOR.CO.KR